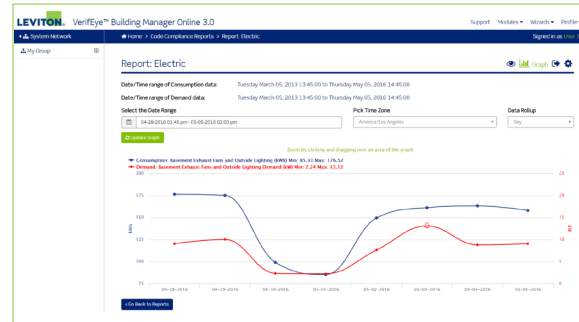


# VerifEye™ BMO 3.0 Code Compliance Module

## Simplified Energy Monitoring Software & Mobile App



Code Compliance Module - Consumption & Demand Graph

### DESCRIPTION

VerifEye™ Building Manager Online (BMO) 3.0 web-based software includes a Code Compliance Module that ensures compliance with local and national submetering requirements for energy codes such as California Title 24 2013, ASHRAE 90.1 2016 and the Seattle Energy Code. Create virtual meters to easily report on aggregated end use energy loads such as lighting, HVAC, plug loads and other equipment. Generate date-based reports for whole building energy sources as well as end use category end users. For added flexibility, user pre-configured reports, alerts and alarms set up in the Code Compliance Module can be accessed remotely via a mobile app on an Android® or Apple® smart device. BMO 3.0 offers several additional high performing expansion module options to provide end users with quick and easy information for advanced energy monitoring and tenant billing applications.

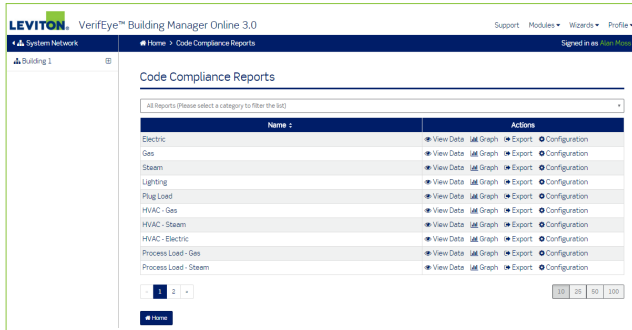
### APPLICATIONS

- Commercial
- Government
- Education
- Industrial
- Multiple Dwelling Units (MDUs)

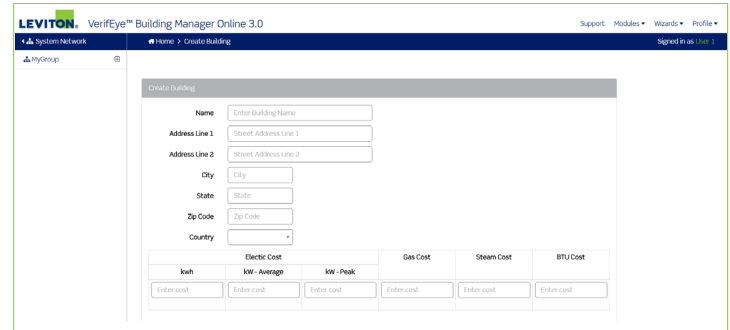
### FEATURES

- Allows a single building with single Hub to meet code compliance requirements for energy information
- Create virtual meters to report aggregated loads for lighting, HVAC, etc.
- View data summarized in a bar or line graph format
- Generate date-based reports for whole building energy sources such as electric, gas and steam as well as end use category energy users such as lighting, plug load, HVAC and more
- Compare energy cost information
- Receive push notifications via the Code Compliance mobile app
- Provides a summary of energy profiles to help identify high and low consumption as well as energy usage patterns for user defined intervals
- View building status, consumption and alarms
- Export energy usage data
- Display energy usage graphs

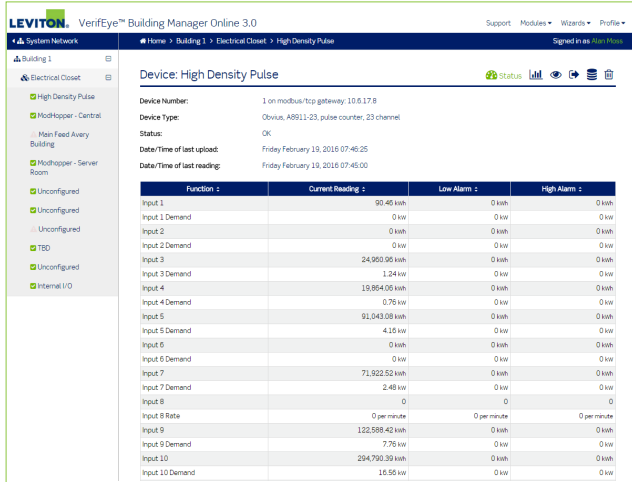
Specifications	Measurement & Verification (M&V) Software			Tenant Billing Software
	Base Module	Code Compliance Module	Executive Reporting (Dashboard) Module	Tenant Billing Module
	Web-Based Software	Web-Based Software and App	Web-Based Software and App	Web-Based Software
Primary Functions	Provides a summary of energy profiles to help identify high and low consumption as well as energy usage patterns for user defined intervals; FREE with the purchase of any VerifEye Hub	Allows end users to meet the growing requirements of local municipal codes such as the Seattle Energy Code and California Title 24 as well as versions of ASHRAE 90.1 in development	Allows executive stakeholders to readily access, understand and display energy usage and cost data specific to their facilities and portfolios in a configurable graphical Dashboard	Allows for tenant billing functionality for multi-unit buildings/facilities all across the commercial MDU market or any multi-space facility where individual tenant invoice creation is required



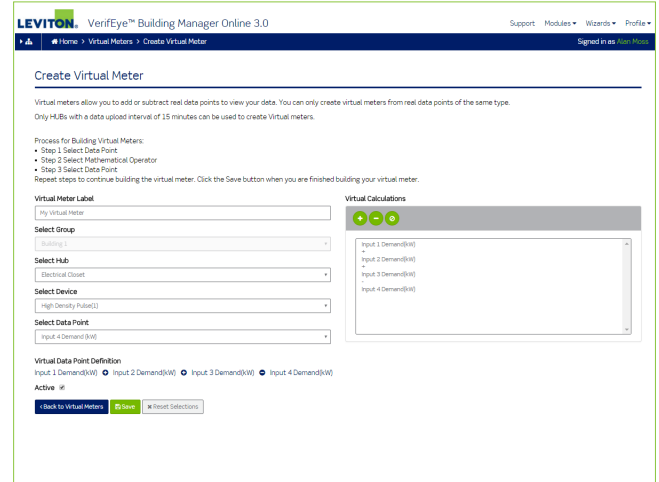
Code Compliance Module - Reports



Code Compliance Module - Building Setup



Code Compliance Module - Status



Code Compliance Module - Create Virtual Meters

## ORDERING INFORMATION

CAT. NO.	DESCRIPTION
BMOSW-COD	VeriEye BMO 3.0 Code Compliance Expansion Module, Single Building Single Hub, Software & Mobile App
BMOSW-EXE	VeriEye BMO 3.0 Executive Reporting Dashboard Expansion Module, Software & Mobile App
BMOSW-BIL	VeriEye BMO 3.0 Tenant Billing Expansion Module, Software
BMOSW-MTR	VeriEye BMO 3.0 Additional 50 Meter Points
BMOSW-ADD	VeriEye BMO 3.0 Additional Buildings—Executive Reporting Dashboard and Tenant Billing Modules Only
<b>Annual Data Storage Fees (required one year after initial activation)</b>	
BMOSW-TR1	VeriEye BMO 3.0 Annual Data Storage Fees—1-50 Meter Points
BMOSW-TR2	VeriEye BMO 3.0 Annual Data Storage Fees—51-100 Meter Points
BMOSW-TR3	VeriEye BMO 3.0 Annual Data Storage Fees—101-250 Meter Points
BMOSW-TR4	VeriEye BMO 3.0 Annual Data Storage Fees—251-1,000 Meter Points
<b>BMO 3.0 Service Plans</b>	
BMOSW-LTP	VeriEye BMO 3.0 Long Term Service Plan, 12 months
BMOSW-STP	VeriEye BMO 3.0 Long Term Service Plan, 90 days