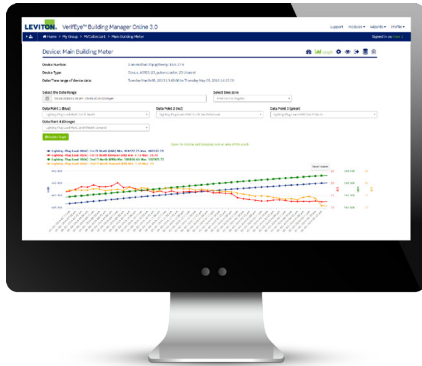


VerifEye™ BMO 3.0 Base Module

Simplified Energy Monitoring Software



DESCRIPTION

VerifEye™ Building Manager Online (BMO) 3.0 web-based software includes a Base Module that provides basic Measurement & Verification (M&V) tools and is included as a value added feature at no cost with the purchase of any VerifEye Hub. The Base Module provides a summary of energy profiles to help identify high and low consumption as well as energy usage patterns for user defined intervals. BMO 3.0 offers several additional high performing expansion module options to provide end users with quick and easy information for advanced energy monitoring and tenant billing applications.

BMO 3.0 allows end users to plot charts and view data quickly without any custom software installed on a PC. Intuitive to use, end users can simply log on to the BMO website with their designated user name and password to view user set alarms and graphical and historical data in intervals from one year to as little as an hour with a few clicks on the drop down calendar.

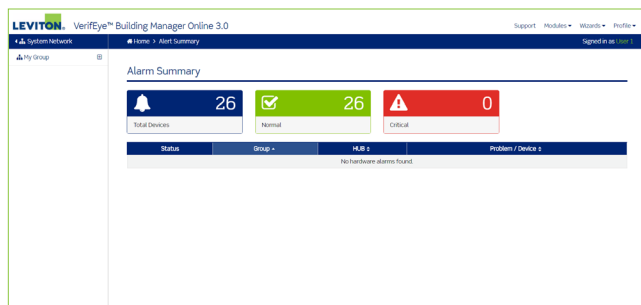
APPLICATIONS

- Commercial
- Government
- Education
- Industrial
- Multiple Dwelling Units (MDUs)
- Mixed Use Buildings (Retail & Residential)

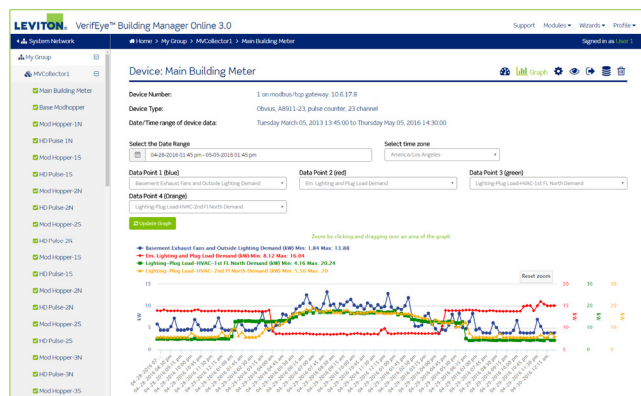
FEATURES

- Provides a summary of energy profiles to help identify high and low consumption as well as energy usage patterns for user defined intervals
- View building status, consumption and alarms
- Export energy usage data
- Display energy usage graphs

Specifications	Measurement & Verification (M&V) Software			Tenant Billing Software
	Base Module	Code Compliance Module	Executive Reporting Dashboard Module	Tenant Billing Module
	Web-Based Software	Web-Based Software and App	Web-Based Software and App	Web-Based Software
Primary Functions	Provides a summary of energy profiles to help identify high and low consumption as well as energy usage patterns for user defined intervals; FREE with the purchase of any VerifEye Hub	Allows end users to meet the growing requirements of local municipal codes such as the Seattle Energy Code and California Title 24 as well as versions of ASHRAE 90.1 in development	Allows executive stakeholders to readily access, understand and display energy usage and cost data specific to their facilities and portfolios in a configurable graphical Dashboard	Allows for tenant billing functionality for multi-unit buildings/facilities all across the commercial MDU market or any multi-space facility where individual tenant invoice creation is required



Base Module - Home



Base Module - Consumption & Demand Graph

ORDERING INFORMATION

CAT. NO.	DESCRIPTION
BMOSW-COD	VeriEye BMO 3.0 Code Compliance Expansion Module, Single Building Single Hub, Software & Mobile App
BMOSW-EXE	VeriEye BMO 3.0 Executive Reporting Dashboard Expansion Module, Software & Mobile App
BMOSW-BIL	VeriEye BMO 3.0 Tenant Billing Expansion Module, Software
BMOSW-MTR	VeriEye BMO 3.0 Additional 50 Meter Points
BMOSW-ADD	VeriEye BMO 3.0 Additional Buildings—Executive Reporting Dashboard and Tenant Billing Modules Only
Annual Data Storage Fees (required one year after initial activation)	
BMOSW-TR1	VeriEye BMO 3.0 Annual Data Storage Fees—1-50 Meter Points
BMOSW-TR2	VeriEye BMO 3.0 Annual Data Storage Fees—51-100 Meter Points
BMOSW-TR3	VeriEye BMO 3.0 Annual Data Storage Fees—101-250 Meter Points
BMOSW-TR4	VeriEye BMO 3.0 Annual Data Storage Fees—251-1,000 Meter Points
BMO 3.0 Service Plans	
BMOSW-LTP	VeriEye BMO 3.0 Long Term Service Plan, 12 months
BMOSW-STO	VeriEye BMO 3.0 Long Term Service Plan, 90 days