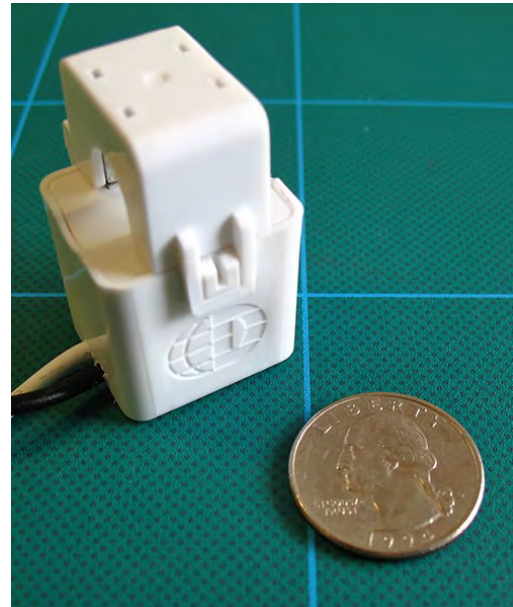


# 20A HIGH PERFORMANCE MINI CURRENT TRANSFORMERS



The hinged "Mini" CTs are small, low-cost current transformers with high accuracy (<0.5%) over a wide dynamic range with excellent phase shift. The "Minis" are ideal where space is limited such as when metering multiple loads within a panel board. Use for current measurement, energy metering, load surveys, demand metering, energy research, and submetering.



## KEY SPECIFICATIONS

|                |  |
|----------------|--|
| Window Size    | 0.4" (10 mm)                                     |
| Current Range* | 0.25 - 40A AC                                    |
| Output         | 333 mV @ 20A AC<br>16.65 mV/A AC                 |
| Ratio Error**  | <0.5% from 0.25 to 40A AC (typical)              |
| Phase Error    | <1.5° from 1 to 40A AC<br><2° From 0.25 to 1A AC |

\* Depending on meter compatibility. See ELITEpro™ and PowerScout™ specifications for details.  
\*\* For maximum performance, keep CT contact surfaces wiped clean and free of debris.

## ELECTRICAL

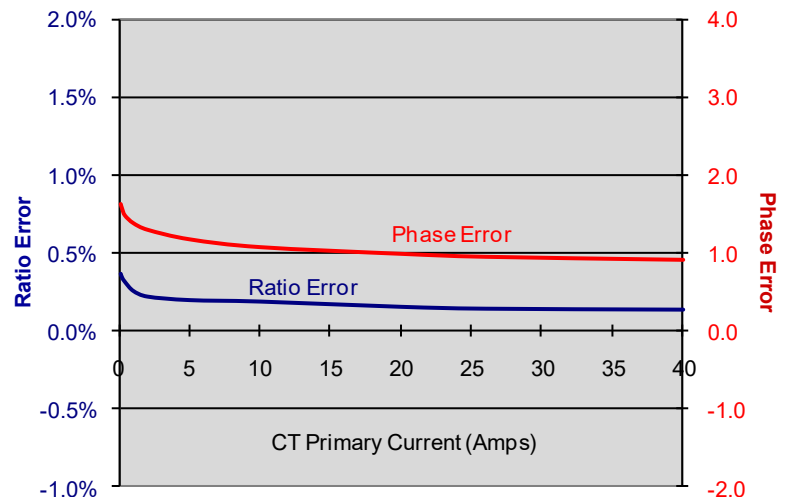
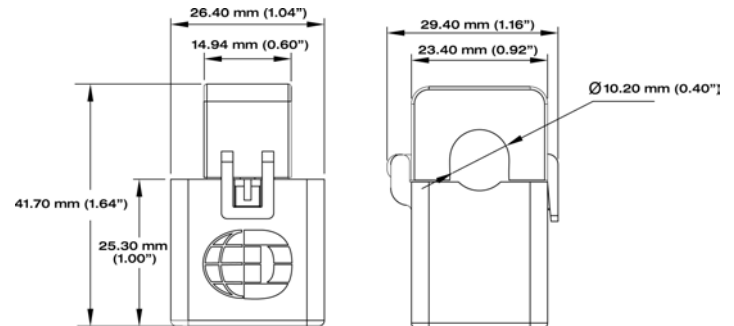
|                 |   |
|-----------------|---|
| Output          | 333 mV @ 20 A   |
| Wire Polarity   | White = Hi, positive (+)<br>Black = Low, negative (-) |
| Phasing         | Arrow On Case Points                                  |
| Orientation     | Toward Load   |
| Frequency Range | 50 to 400 Hz  |

## MECHANICAL

|                     |                          |
|---------------------|--------------------------|
| Case Material       | White Nylon, UL 94 V-0   |
| Leads               | 600V, 20 gage            |
| Working Temperature | -15 to 60°C (5 to 140°F) |

## SAFETY

|                     |   |
|---------------------|---|
| Working Voltage     | 600 VAC, Category III   |
| Dielectric Strength | 3520 VAC for 1 minute   |
| Certifications      | Conforms to:<br>UL STD 61010-1<br>Certified to:<br>CAN/CSA STD C22.2<br>No. 61010-1 |



## PART NUMBERS

|                    | 3 M Leads    | 7 M Leads       |
|--------------------|--------------|-----------------|
| 20A Mini Hinged CT | CT-HSC-020-U | CT-HSC-020-U-7M |

## CONTACT US

DENT Instruments, Inc.  
Energy & Power Measurement Solutions