



## E31E Series

### Split-Core Panelboard Monitoring System

#### Product Overview

The E31E Series panelboard monitoring system is designed to measure the current, voltage, and energy consumption of up to 92 circuits (84 branch circuits, 2 3-phase mains, 2 neutrals), enabling users to monitor two panelboards or an entire data center PDU with a single product. It increases the board's current monitoring capability by combining the functions of two boards into one device.

The E31E consists of a data acquisition module, up to four current sensor adapter boards, and up to 84 split-core branch current sensors (50A, 100A, or 200A), with eight auxiliary inputs. Each conductor passes through the appropriate branch current sensor before terminating at the breaker. Each sensor transmits the current data to the data acquisition board. The E31E measures both current and power for the mains and branch circuits. The E31E can easily accommodate different panel configurations, including any combination of multi-phase breaker positions, voltage phase mapping, and breaker sizes. To configure the E31E for operation, download the E3x Configuration Tool and the E3x Commissioning Guide from [www.veris.com](http://www.veris.com).

Data is transmitted via ethernet with Modbus TCP, BACnet IP or SNMP protocol, or via RS-485 with Modbus RTU or BACnet MS/TP protocols. Some protocols can be used simultaneously, and the ethernet protocols all support access by multiple masters. Each data acquisition board requires two Modbus addresses, one for each set of 42 current sensors, and four auxiliary inputs. Data is updated roughly every two seconds. When a circuit exceeds the user-defined thresholds, the E31E activates the alarm indicators. The communication interfaces and protocols require some configuration at the time of installation.

#### Product Identification

# of CTs

E31E



- 002 = 2 adapter boards, no CTs, no cables
- 004 = 4 adapter boards, no CTs, no cables
- 42 = 2 adapter boards, 42 50A CTs, 2 4 ft. round ribbon cables
- 84 = 4 adapter boards, 84 50A CTs, 4 4 ft. round ribbon cables



### **DANGER**

#### HAZARD OF ELECTRIC SHOCK, EXPLOSION, OR ARC FLASH

- Follow safe electrical work practices. See NFPA 70E in the USA, or applicable local codes.
- This equipment must only be installed and serviced by qualified electrical personnel.
- Read, understand and follow the instructions before installing this product.
- Turn off all power supplying equipment before working on or inside the equipment.
- Product may use multiple voltage/power sources. Be sure all sources of power have been disconnected before servicing.
- Use a properly rated voltage sensing device to confirm power is off.  
DO NOT DEPEND ON THIS PRODUCT FOR VOLTAGE INDICATION
- Only install this product on insulated conductors.

Failure to follow these instructions will result in death or serious injury.

A qualified person is one who has skills and knowledge related to the construction and operation of this electrical equipment and the installation, and has received safety training to recognize and avoid the hazards involved. NEC2011 Article 100  
No responsibility is assumed by Veris Industries for any consequences arising out of the use of this material.

### **NOTICE**

- This product is not intended for life or safety applications.
- Do not install this product in hazardous or classified locations.
- The installer is responsible for conformance to all applicable codes.
- Mount this product inside a suitable fire and electrical enclosure.

#### FCC PART 15 INFORMATION

NOTE: This equipment has been tested by the manufacturer and found to comply with the limits for a class A digital device, pursuant to part 15 of the FCC Rules. These limits are designed to provide reasonable protection against harmful interference when the equipment is operated in a commercial environment. This equipment generates, uses, and can radiate radio frequency energy and, if not installed and used in accordance with the instruction manual, may cause harmful interference to radio communications. Operation of this equipment in a residential area is likely to cause harmful interference in which case the user will be required to correct the interference at his own expense. Modifications to this product without the express authorization of Veris Industries nullify this statement.

This Class A digital apparatus complies with Canadian ICES-003.)

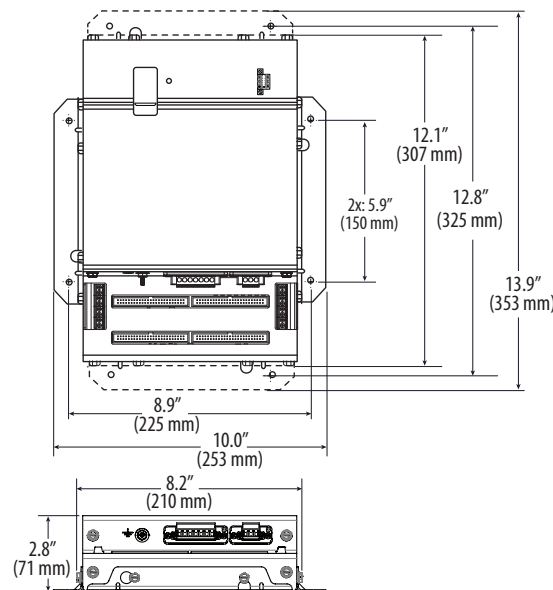
## Specifications

<b>INPUTS</b>	
<b>Input Power</b>	100-277VAC, 50/60 Hz, 15VA max.
<b>Terminal Block Torque</b>	4.4 to 5.3 in-lb (0.5 to 0.6 N-m)
<b>Wire Size</b>	up to 12 AWG
<b>AUXILIARY INPUTS</b>	
<b>Terminal Block Torque</b>	3.5 to 4.4 in-lb (0.4 to 0.5 N-m)
<b>Wire Size</b>	up to 14 AWG
<b>ACCURACY</b>	
<b>Power/Energy</b>	IEC 62053-21 Class 1, ANSI C12.1-2008 (1% System accuracy includes both the E31E main unit and 50A or 100A branch current sensors)
<b>Voltage</b>	±0.5% of reading 90-277VAC line-to-neutral
<b>Current</b>	±0.5% of reading
<b>Minimum ON Current</b>	50 mA
<b>OPERATION</b>	
<b>Sampling Frequency</b>	2560 Hz
<b>Update Rate</b>	Modbus: ~1.8 seconds (both panels) BACnet: 14 seconds SNMP: 20 seconds
<b>ETHERNET COMMUNICATION</b>	
<b>Physical Interface</b>	RJ45 connector with 10/100 Mbit Ethernet
<b>Protocols Supported</b>	Modbus TCP, BACnet IP, SNMP V2c
<b>SERIAL COMMUNICATION</b>	
<b>Physical Interface</b>	2-wire RS-485
<b>Serial Protocols Supported</b>	Modbus RTU or BACnet MSTP
<b>Address Range</b>	Fixed at address 1 & 2 for Modbus RTU, 0-127 for BACnet MS/TP
<b>Baud Rate</b>	9600, 19200, 38400
<b>Parity</b>	Modbus RTU: NONE, ODD, EVEN BACnet MS/TP: NONE (fixed)
<b>Communication Format</b>	8-data-bits, 1-start-bit, 1-stop-bit
<b>Termination</b>	2x3 position connector
<b>Terminal Block Torque</b>	4.4 to 5.3 in-lb (0.5 to 0.6 N-m)
<b>Wire Size</b>	up to 16 AWG
<b>MECHANICAL</b>	
<b>Ribbon Cable Support</b>	4 ft. (1.2 m) flat ribbon cable ships standard with 42 and 84 current sensor models; up to 20 ft. (6 m) available
<b>OPERATING CONDITIONS</b>	
<b>Operating Temperature Range</b>	0° to 60°C (32° to 140°F) (<95% RH noncondensing)
<b>Storage Temperature Range</b>	-40° to 70°C (-40° to 158°F)
<b>Altitude of Operation</b>	3000 m max.
<b>COMPLIANCE INFORMATION</b>	
<b>Approvals</b>	UL508, EN61010-1

## Table of Contents

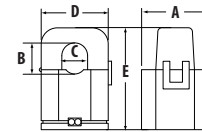
Dimensions	3
Product Diagram	4
Data Outputs	5
Split-Core Current Sensors	7
Installation	7
Wiring	11
Gateway Configuration	13
BACnet PICS	23
General BACnet Programming Information	24
General SNMP Programming Information	25
Troubleshooting	26
China RoHS Compliance Information (EFUP Table)	26

## Dimensions

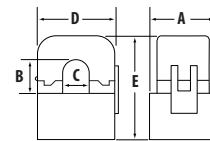


*Note: The dotted lines indicate dimensions if the two brackets are placed for horizontal mounting. At the factory, the brackets are placed for vertical mounting. See Installation section for more information.*

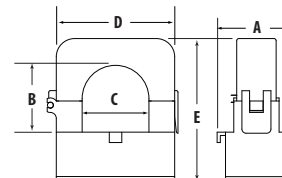
### Current Sensors



**E31CT0 50 Amp**  
 A = 1.0" (26 mm)  
 B = 0.5" (11 mm)  
 C = 0.4" (10 mm)  
 D = 0.9" (23 mm)  
 E = 1.6" (40 mm)

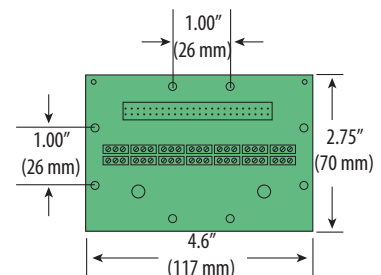


**E31CT1 100 Amp**  
 A = 1.5" (39 mm)  
 B = 0.8" (20 mm)  
 C = 0.7" (16 mm)  
 D = 1.6" (40 mm)  
 E = 2.1" (53 mm)

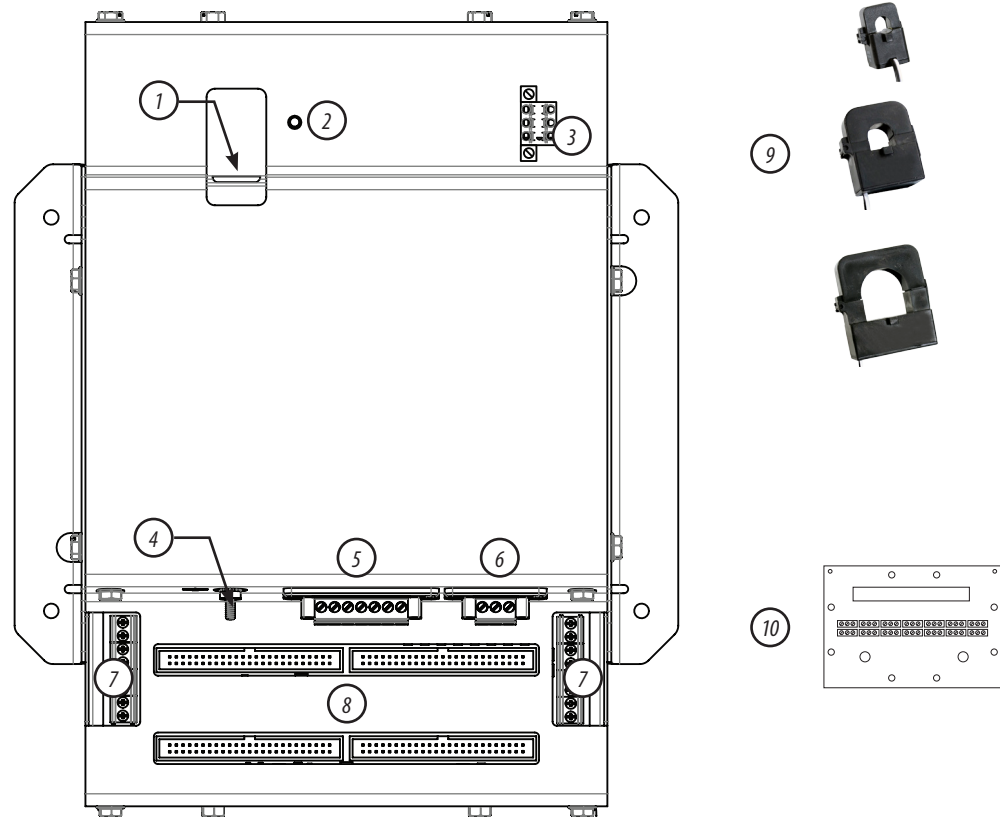


**E31CT3 200 Amp**  
 A = 1.5" (39 mm)  
 B = 1.25" (32 mm)  
 C = 1.25" (32 mm)  
 D = 2.5" (64 mm)  
 E = 2.8" (71 mm)

### Adapter Board



## Product Diagram



1. Ethernet port: provides ethernet connection for the gateway component
  2. Power LED: indicates power is applied to the meter.
  3. 2x3 RS-485 Serial Connection
  4. Grounding post
  5. Voltage Taps: 1, 2, or 3 phase plus neutral connections. For voltage sensing and power calculations
  6. Control (Mains) Power Connection: Easy 2-wire 100-277 VAC 50/60 Hz connection.
  7. Auxiliary Inputs: These 0.333 VAC inputs are used for monitoring the main breaker or other high amperage source. Inputs on the left are for panelboard 2; inputs on the right are for panelboard 1.
  8. 50-Pin Ribbon Cable Connectors: 4-foot (0.9 m) ribbon cables are provided for easy connection of the adapter boards to this point of the data acquisition board. Other ribbon cable lengths are available (sold separately). The two connectors on the left are for panelboard 2; the two on the right are for panelboard 1.
- Connect adapter boards A and B to the correct ribbon cable connectors for each panel. The top connectors are for Board B, and the bottom connectors are for Board A.
- Note: Ribbon cables are not included with all E31E models (see Ordering Information).
9. Branch Current Sensors: Each split-core current sensor is capable of monitoring conductors rated up to a maximum of 50, 100, or 200 amps. Up to 84 sensors can be used with the E31E. One of each style is pictured here.
  10. Adapter Board: Includes connectors for a ribbon cable and up to 42 current sensors.

## Data Outputs

The E31E provides several types of measurements that give a comprehensive view of power consumption for every monitored load on the panel:

- Real-time measurements: a live and up-to-date view of present power levels and the factors that affect them.
- Demand measurements: averages of values measured over a specified time interval. The time interval (typically 15 minutes) can be set from 10 seconds to more than a day. The demand calculation can be configured to use single intervals or the sliding average of up to 6 sub-intervals. Demand measurements are useful for tracking or graphing load levels over time to correlate with total energy consumption.
- Historic maximum measurements: these measurements store the largest value recorded for a specific measurement since the last time they were cleared. They are useful for identifying peak levels critical to equipment sizing or demand limits in utility agreements.
- Accumulated energy measurements: ongoing totals of cumulative energy used since the last time the value was cleared. Energy values provide the informational basis for billing, cost allocation, carbon offset, BTU equivalent calculations, and other applications of overall energy use.
- Energy snapshots: energy totals that only change when the demand intervals are updated. They are samples of the free-running energy accumulators at the end of each demand interval, as configured by the user. These provide energy readings that are easily correlated to the demand values to simplify the tasks of sub-billing and cost allocation.
- Alarms: provide a warning of excessively high or low current on each branch and aux channel. The user can set two high-level and two low-level thresholds, and a delay time for latching alarms. Alarms are reported as both non-latched events and latched events. Non-latching alarms are active while the current exceeds the threshold, but go inactive if the current returns to a level within the specific thresholds. Latching alarms become active when the current exceeds the threshold for a time period greater than the specified delay and remain active until they are cleared remotely. Alarm status can be polled via any protocol. Via BACnet, Subscribe\_COV can be used to generate alarm notifications. Via SNMP, alarms drive SNMP event notifications.

**Advanced Features** - The E31E supports a number of advanced features. Some are always active, and others are configured manually via Modbus register 62017, BACnet object AV164, or SNMP MIB variable "spanels/panel1/p1Configuration/p1Setup/p1UserDefinedSettings" (OID .1.3.6.1.4.1.40845.1.30.1.1.6.3.4.0). For models with 42 channels or more, these features are configured independently for each panel.

- Logical Circuit support: The E31E can be configured to map any set of 1, 2 or 3 channels that are adjacent in the panel to a logical circuit that provides accurate multi-phase measurement totals. Map these logical circuits by writing the desired logical circuit number into a set of registers/data objects provided for each branch and aux channel (per panel). The channels assigned to each logical circuit must be adjacent in the panel (usually used for multi-phase breakers), but there are no limitations on where those adjacent channels are aligned in the panel (any position where a multi-phase breaker can be installed). This functionality is always active, but a user selection affects the how the data can be accessed via Modbus. Measurement data via Modbus for logical circuits is presented in two ways, arranged either by logical circuit number (looks more like a collection of individual meters) or by measurement type (arranged similar to the single-phase data section of the point map).
- Legacy point map or alternate logical circuit point map: The E31E can be configured to select a preferred version of the Modbus registers in the address range 4000 to 9999. If enabled (default), the logical circuits by measurement type is active. Otherwise, the legacy point maps for 2-phase and 3-phase breakers used in older E3x models is active. The logical circuits functionality can also be accessed via the "Logical Circuits by Circuit" section of the point map (address range 10000 to 45000), regardless of the state of this selection.
- Phase angle measurements: The E31E measures the phase angle of every voltage and current input and presents these measurements (in degrees) in additional data registers/objects. These values are used to verify that current inputs are assigned to the proper voltage phases and to help determine how power factor variations are influenced by current phase changes vs. harmonic distortion. Phase angle measurements are instantaneous and always active.
- User CT phase assignment: In the default mode, the E31E assigns each channel to the corresponding phase that most 3-phase panels implement, so that the user does not have worry about it. The user can opt to replace this self-assignment paradigm with a mode that allows explicit specification of the phase assignment for each channel. The explicit assignments set by the user are stored by the E31E in non-volatile memory.
- Phase angle reference: The E31E measures the phase angle of every current and voltage input. The user can select whether the phase angles are stated relative to an absolute reference (the phase angle of voltage input V1) or relative to the voltage phase assigned to that specific current input channel.

## Data Outputs (cont.)

- Signed power: Users can configure the E31E to report power as a signed value indicating whether the power is currently being delivered (imported from the grid) or received (exported to the grid) for channels with generation sources or bi-directional (regenerative) loads. When signed power is disabled, the energy accumulators include all energy measured, regardless of direction. When signed power is enabled, the energy accumulators only include all energy delivered (imported from the grid).
- Signed power factor: By default the E31E reports power factor as an unsigned value. The user can set it to report as a signed value, where the sign indicates whether the current phase angle leads or lags the corresponding voltage phase.
- Demand/snapshot time interval source: The E31E offers two mechanisms for driving the demand/snapshot time interval, an interval timer or an RTC (real-time clock). The legacy mode (default) uses an interval timer that does not need to be set to an absolute time. When using the interval timer the demand/snapshot interval can be set from 10 to 32767 seconds (over 9 hours). An alternate mode utilizes an RTC set to a specific date and time to synchronize the results with a larger system. The RTC must first be set in order to run and capture demand values and energy snapshots. When power is interrupted, the RTC resets to a default date and time and must be set again in order to run. When using the RTC, the demand/snapshot interval can be set from 10 to 3600 seconds (1 hour).

Monitoring of Mains	
Real Time Measurements	Current: multi-phase average and per phase
	Current phase angle
	Real power (kW): multi-phase total and per phase
	Apparent power (kVA): multi-phase total and per phase
	Power factor: multi-phase average and per phase
	Voltage - L-L: multi-phase average and per phase
	Voltage - L-N: multi-phase average and per phase
	Frequency (phase A)
Demand Measurements	Current present demand: multi-phase average and per phase
	Real Power (kW) present demand: multi-phase average and per phase
Historic Maximums	Maximum instantaneous current: multi-phase average and per phase
	Maximum current demand: multi-phase average and per phase
	Maximum real power demand: multi-phase total and per phase
Accumulated Energy	Energy (kWh): multi-phase total and per phase
Energy Snapshots	Energy (kWh): multi-phase total and per phase
Monitoring of Branch Circuits	
Real Time Measurements	Current: multi-phase average and per phase
	Current phase angle per branch
	Real power (kW): multi-phase total and per phase
	Apparent power (kVA): multi-phase total and per phase
	Power factor: multi-phase average and per phase
Demand Measurements	Current present demand: multi-phase average and per phase
	Real power (kW) present demand: multi-phase average and per phase
Historic Maximums	Maximum instantaneous current: multi-phase average and per phase
	Maximum current demand: multi-phase average and per phase
	Maximum real power demand: multi-phase total and per phase
Accumulated Energy	Energy (kWh): multi-phase total and per phase
Energy Snapshots	Energy (kWh): multi-phase total and per phase
Modbus Alarms	
Alarms	Voltage over/under
	Branch current over/under
	Mains current over/under

## Split-Core Current Sensors

	50 A Split-Core CT	100 A Split-Core CT	200 A Split-Core CT
Voltage Rating	300 VAC	300 VAC (CE), 600 VAC (UL)	300 VAC (CE), 600 VAC (UL)
Accuracy	±1%	±0.5%	±1%
Temperature	0° to 60°C	0° to 60°C	0° to 60°C
Agency	UL 61010-1 Recognized, EN61010-1	UL 61010-1 Recognized, EN61010-1	UL 61010-1 Recognized, EN61010-1

## Installation

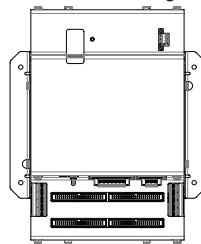


Observe precautions for handling static sensitive devices to avoid damage to the circuitry that is not covered under the factory warranty.

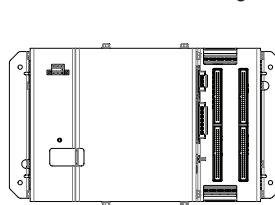
### **Disconnect power to the panel before beginning the installation.**

1. Locate a surface inside the electrical enclosure to mount the E31E. Decide whether to mount the E31E vertically or horizontally. The E31E is shipped with the brackets placed for vertical mounting. If mounting horizontally, loosen the screws on the sides of the E31E that hold the brackets in place (do not fully remove the screws from the E31E housing). Loosen the screws on the other two sides of the housing (do not fully remove the screws from the E31E housing), and set the brackets into their new positions. Tighten all screws.

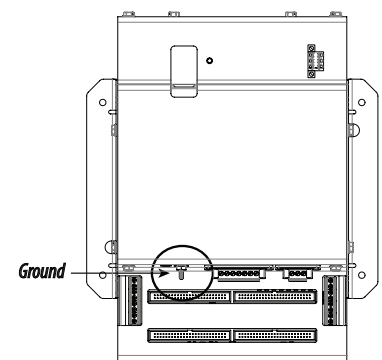
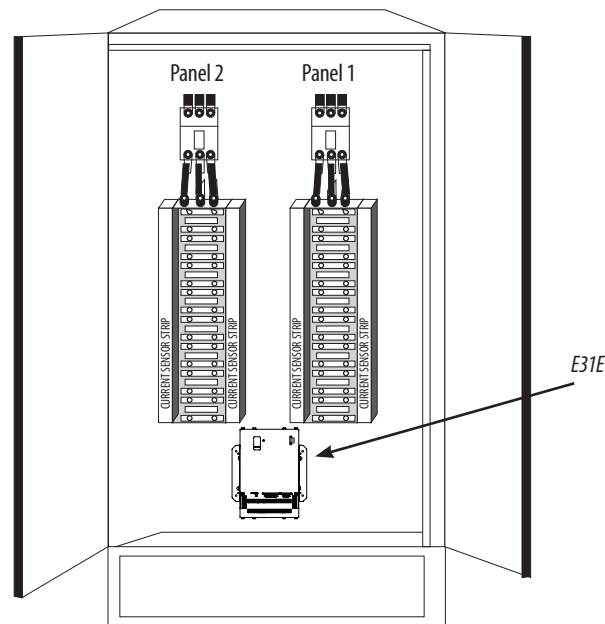
#### Vertical Mounting



#### Horizontal Mounting



2. Install the E31E in the panel (hardware not provided). A grounding connection is located on the housing (see below). Use this stud to ground the device when it is mounted on a nonconductive surface.

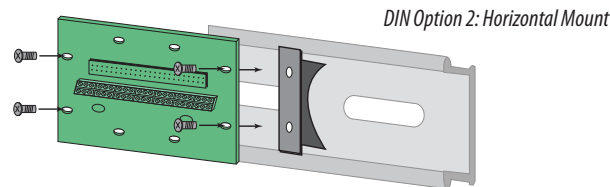
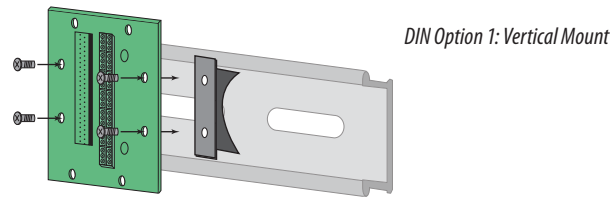




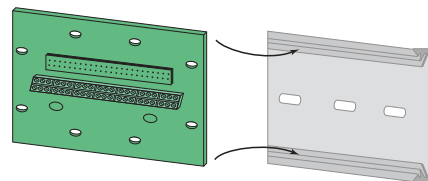
## Installation (cont.)

- Choose a location to mount the adapter boards in the same panel as the E31E. Mount the adapter boards using either DIN rail or SNAPTRACK.

A. DIN Rail: Use the supplied screws to secure the plastic DIN clip to the adapter board. Affix the clip to the DIN rail.



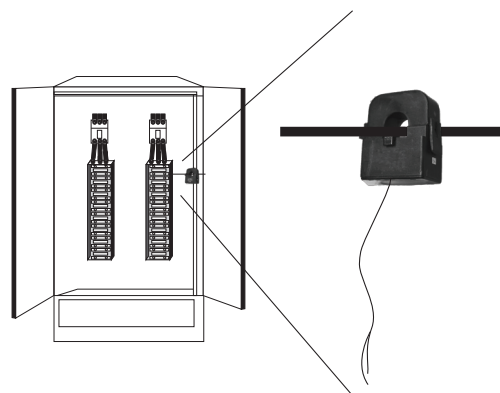
B. SNAPTRACK: Secure the SNAPTRACK to the mounting surface. Click the adapter board into place.



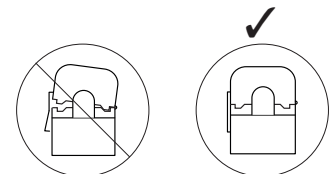
- Install the current sensors onto the conductors to be monitored.

**Orientation Note:** If the signed power factor feature is NOT enabled, then the current sensor orientation does not affect meter behavior. If this feature IS enabled, orient the current sensors so that the arrow points toward the load for proper operation.

**Note:** Clean split-core contact surfaces before closing. The hinge can detach, allowing the base and the top to separate for easier cleaning and installation.



Close current sensors until the clasp clicks into place to ensure that contact surfaces are firmly seated.

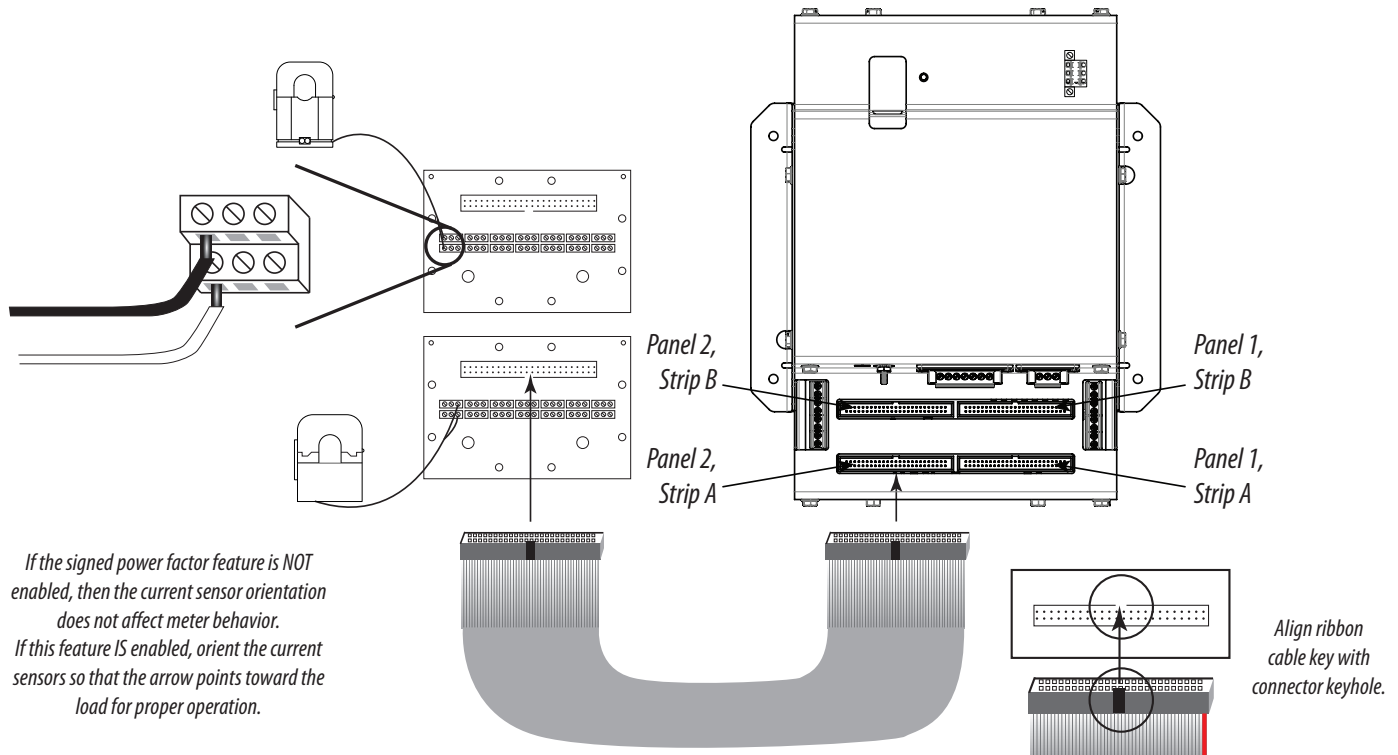


The 50 A CT accepts a maximum #2 AWG (0.384" O.D.) wire with THHN insulation.  
The 100 A CT accepts a maximum 3/0 AWG (0.584" O.D.) wire with THHN insulation.  
The 200 A CT accepts a maximum of 350 MCM wire with THHN insulation.

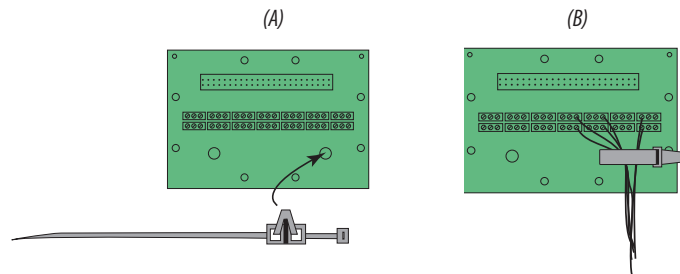


## Installation (cont.)

5. Connect the adapter boards to the main board using ribbon cable. Ribbon cables are keyed to ensure proper installation.
6. Connect the current sensors to the terminals on the adapter boards.



7. Plastic cable ties are included with the product for strain relief. Insert the strain relief device into one of the available holes on the adapter board (A). Gather all current sensor wires connected to that adapter board and secure the cable tie around them (B).



## Installation (cont.)

8. The adapter boards are silk screened with two rows of numbers. For applications that require odd/even branch circuit numbering, use the row designated ODD or EVEN. For applications that require sequential numbering, use the number row marked SEQ.

BLACK	<div></div>	<div></div>	<div></div>	<div></div>	<div></div>	<div></div>	<div></div>	<div></div>	<div></div>	<div></div>	<div></div>	<div></div>	<div></div>	<div></div>	<div></div>	<div></div>	<div></div>	<div></div>	<div></div>	<div></div>	<div></div>	<div></div>	<div></div>	<div></div>	<div></div>	<div></div>	<div></div>	<div></div>	<div></div>	<div></div>	<div></div>	<div></div>	<div></div>	<div></div>	<div></div>	<div></div>	<div></div>	<div></div>	<div></div>	<div></div>	<div></div>	<div></div>	<div></div>	<div></div>	<div></div>	<div></div>	<div></div>	<div></div>	<div></div>	<div></div>	<div></div>	<div></div>	<div></div>	<div></div>	<div></div>	<div></div>	<div></div>	<div></div>	<div></div>	<div></div>	<div></div>	<div></div>	<div></div>	<div></div>	<div></div>	<div></div>	<div></div>	<div></div>	<div></div>	<div></div>	<div></div>	<div></div>	<div></div>	<div></div>	<div></div>	<div></div>	<div></div>	<div></div>	<div></div>	<div></div>	<div></div>	<div></div>	<div></div>	<div></div>	<div></div>	<div></div>	<div></div>	<div></div>	<div></div>	<div></div>	<div></div>	<div></div>	<div></div>	<div></div>	<div></div>	<div></div>	<div></div>	<div></div>	<div></div>	<div></div>	<div></div>	<div></div>	<div></div>	<div></div>	<div></div>	<div></div>	<div></div>	<div></div>	<div></div>	<div></div>	<div></div>	<div></div>	<div></div>	<div></div>	<div></div>	<div></div>	<div></div>	<div></div>	<div></div>	<div></div>	<div></div>	<div></div>	<div></div>	<div></div>	<div></div>	<div></div>	<div></div>	<div></div>	<div></div>	<div></div>	<div></div>	<div></div>	<div></div>	<div></div>	<div></div>	<div></div>	<div></div>	<div></div>	<div></div>	<div></div>	<div></div>	<div></div>	<div></div>	<div></div>	<div></div>	<div></div>	<div></div>	<div></div>	<div></div>	<div></div>	<div></div>	<div></div>	<div></div>	<div></div>	<div></div>	<div></div>	<div></div>	<div></div>	<div></div>	<div></div>	<div></div>	<div></div>	<div></div>	<div></div>	<div></div>	<div></div>	<div></div>	<div></div>	<div></div>	<div></div>	<div></div>	<div></div>	<div></div>	<div></div>	<div></div>	<div></div>	<div></div>	<div></div>	<div></div>	<div></div>	<div></div>	<div></div>	<div></div>	<div></div>	<div></div>	<div></div>	<div></div>	<div></div>	<div></div>	<div></div>	<div></div>	<div></div>	<div></div>	<div></div>	<div></div>	<div></div>	<div></div>	<div></div>	<div></div>	<div></div>	<div></div>	<div></div>	<div></div>	<div></div>	<div></div>	<div></div>	<div></div>	<div></div>	<div></div>	<div></div>	<div></div>	<div></div>	<div></div>	<div></div>	<div></div>	<div></div>	<div></div>	<div></div>	<div></div>	<div></div>	<div></div>	<div></div>	<div></div>	<div></div>	<div></div>	<div></div>	<div></div>	<div></div>	<div></div>	<div></div>	<div></div>	<div></div>	<div></div>	<div></div>	<div></div>	<div></div>	<div></div>	<div></div>	<div></div>	<div></div>	<div></div>	<div></div>	<div></div>	<div></div>	<div></div>	<div></div>	<div></div>	<div></div>	<div></div>	<div></div>	<div></div>	<div></div>	<div></div>	<div></div>	<div></div>	<div></div>	<div></div>	<div></div>	<div></div>	<div></div>	<div></div>	<div></div>	<div></div>	<div></div>	<div></div>	<div></div>	<div></div>	<div></div>	<div></div>	<div></div>	<div></div>	<div></div>	<div></div>	<div></div>	<div></div>	<div></div>	<div></div>	<div></div>	<div></div>	<div></div>	<div></div>	<div></div>	<div></div>	<div></div>	<div></div>	<div></div>	<div></div>	<div></div>	<div></div>	<div></div>	<div></div>	<div></div>	<div></div>	<div></div>	<div></div>	<div></div>	<div></div>	<div></div>	<div></div>	<div></div>	<div></div>	<div></div>	<div></div>	<div></div>	<div></div>	<div></div>	<div></div>	<div></div>	<div></div>	<div></div>	<div></div>	<div></div>	<div></div>	<div></div>	<div></div>	<div></div>	<div></div>	<div></div>	<div></div>	<div></div>	<div></div>	<div></div>	<div></div>	<div></div>	<div></div>	<div></div>	<div></div>	<div></div>	<div></div>	<div></div>	<div></div>	<div></div>	<div></div>	<div></div>	<div></div>	<div></div>	<div></div>	<div></div>	<div></div>	<div></div>	<div></div>	<div></div>	<div></div>	<div></div>	<div></div>	<div></div>	<div></div>	<div></div>	<div></div>	<div></div>	<div></div>	<div></div>	<div></div>	<div></div>	<div></div>	<div></div>	<div></div>	<div></div>	<div></div>	<div></div>	<div></div>	<div></div>	<div></div>	<div></div>	<div></div>	<div></div>	<div></div>	<div></div>	<div></div>	<div></div>	<div></div>	<div></div>	<div></div>	<div></div>	<div></div>	<div></div>	<div></div>	<div></div>	<div></div>	<div></div>	<div></div>	<div></div>	<div></div>	<div></div>	<div></div>	<div></div>	<div></div>	<div></div>	<div></div>	<div></div>	<div></div>	<div></div>	<div></div>	<div></div>	<div></div>	<div></div>	<div></div>	<div></div>	<div></div>	<div></div>	<div></div>	<div></div>	<div></div>	<div></div>	<div></div>	<div></div>	<div></div>	<div></div>	<div></div>	<div></div>	<div></div>	<div></div>	<div></div>	<div></div>	<div></div>	<div></div>	<div></div>	<div></div>	<div></div>	<div></div>	<div></div>	<div></div>	<div></div>	<div></div>	<div></div>	<div></div>	<div></div>	<div></div>	<div></div>	<div></div>	<div></div>	<div></div>	<div></div>	<div></div>	<div></div>	<div></div>	<div></div>	<div></div>	<div></div>	<div></div>	<div></div>	<div></div>	<div></div>	<div></div>	<div></div>	<div></div>	<div></div>	<div></div>	<div></div>	<div></div>	<div></div>	<div></div>	<div></div>	<div></div>	<div></div>	<div></div>	<div></div>	<div></div>	<div></div>	<div></div>	<div></div>	<div></div>	<div></div>	<div></div>	<div></div>	<div></div>	<div></div>	<div></div>	<div></div>	<div></div>	<div></div>	<div></div>	<div></div>	<div></div>	<div></div>	<div></div>	<div></div>	<div></div>	<div></div>	<div></div>	<div></div>	<div></div>	<div></div>	<div></div>	<div></div>	<div></div>	<div></div>	<div></div>	<div></div>	<div></div>	<div></div>	<div></div>	<div></div>	<div></div>	<div></div>	<div></div>	<div></div>	<div></div>	<div></div>	<div></div>	<div></div>	<div></div>	<div></div>	<div></div>	<div></div>	<div></div>	<div></div>	<div></div>	<div></div>	<div></div>	<div></div>	<div></div>	<div></div>	<div></div>	<div></div>	<div></div>	<div></div>	<div></div>	<div></div>	<div></div>	<div></div>	<div></div>	<div></div>	<div></div>	<div></div>	<div></div>	<div></div>	<div></div>	<div></div>	<div></div>	<div></div>	<div></div>	<div></div>	<div></div>	<div></div>	<div></div>	<div></div>	<div></div>	<div></div>	<div></div>	<div></div>	<div></div>	<div></div>	<div></div>	<div></div>	<div></div>	<div></div>	<div></div>	<div></div>	<div></div>	<div></div>	<div></div>	<div></div>	<div></div>	<div></div>	<div></div>	<div></div>	<div></div>	<div></div>	<div></div>	<div></div>	<div></div>	<div></div>	<div></div>	<div></div>	<div></div>	<div></div>	<div></div>	<div></div>	<div></div>	<div></div>	<div></div>	<div></div>	<div></div>	<div></div>	<div></div>	<div></div>	<div></div>	<div></div>	<div></div>	<div></div>	<div></div>	<div></div>	<div></div>	<div></div>	<div></div>	<div></div>	<div></div>	<div></div>	<div></div>	<div></div>	<div></div>	<div></div>	<div></div>	<div></div>	<div></div>	<div></div>	<div></div>	<div></div>	<div></div>	<div></div>	<div></div>	<div></div>	<div></div>	<div></div>	<div></div>	<div></div>	<div></div>	<div></div>	<div></div>	<div></div>	<div></div>	<div></div>	<div></div>	<div></div>	<div></div>	<div></div>	<div></div>	<div></div>	<div></div>	<div></div>	<div></div>	<div></div>	<div></div>	<div></div>	<div></div>	<div></div>	<div></div>	<div></div>	<div></div>	<div></div>	<div></div>	<div></div>	<div></div>	<div></div>	<div></div>	<div></div>	<div></div>	<div></div>	<div></div>	<div></div>	<div></div>	<div></div>	<div></div>	<div></div>	<div></div>	<div></div>	<div></div>	<div></div>	<div></div>	<div></div>	<div></div>	<div></div>	<div></div>	<div></div>	<div></div>	<div></div>	<div></div>	<div></div>	<div></div>	<div></div>	<div></div>	<div></div>	<div></div>	<div></div>	<div></div>	<div></div>	<div></div>	<div></div>	<div></div>	<div></div>	<div></div>	<div></div>	<div></div>	<div></div>	<div></div>	<div></div>	<div></div>	<div></div>	<div></div>	<div></div>	<div></div>	<div></div>	<div></div>	<div></div>	<div></div>	<div></div>	<div></div>	<div></div>	<div></div>	<div></div>	<div></div>	<div></div>	<div></div>	<div></div>	<div></div>	<div></div>	<div></div>	<div></div>	<div></div>	<div></div>	<div></div>	<div></div>	<div></div>	<div></div>	<div></div>	<div></div>	<div></div>	<div></div>	<div></div>	<div></div>	<div></div>	<div></div>	<div></div>	<div></div>	<div></div>	<div></div>	<div></div>	<div></div>	<div></div>	<div></div>	<div></div>	<div></div>	<div></div>	<div></div>	<div></div>	<div></div>	<div></div>	<div></div>	<div></div>	<div></div>	<div></div>	<div></div>	<div></div>	<div></div>	<div></div>	<div></div>	<div></div>	<div></div>	<div></div>	<div></div>	<div></div>	<div></div>	<div></div>	<div></div>	<div></div>	<div></div>	
-------	-------------	-------------	-------------	-------------	-------------	-------------	-------------	-------------	-------------	-------------	-------------	-------------	-------------	-------------	-------------	-------------	-------------	-------------	-------------	-------------	-------------	-------------	-------------	-------------	-------------	-------------	-------------	-------------	-------------	-------------	-------------	-------------	-------------	-------------	-------------	-------------	-------------	-------------	-------------	-------------	-------------	-------------	-------------	-------------	-------------	-------------	-------------	-------------	-------------	-------------	-------------	-------------	-------------	-------------	-------------	-------------	-------------	-------------	-------------	-------------	-------------	-------------	-------------	-------------	-------------	-------------	-------------	-------------	-------------	-------------	-------------	-------------	-------------	-------------	-------------	-------------	-------------	-------------	-------------	-------------	-------------	-------------	-------------	-------------	-------------	-------------	-------------	-------------	-------------	-------------	-------------	-------------	-------------	-------------	-------------	-------------	-------------	-------------	-------------	-------------	-------------	-------------	-------------	-------------	-------------	-------------	-------------	-------------	-------------	-------------	-------------	-------------	-------------	-------------	-------------	-------------	-------------	-------------	-------------	-------------	-------------	-------------	-------------	-------------	-------------	-------------	-------------	-------------	-------------	-------------	-------------	-------------	-------------	-------------	-------------	-------------	-------------	-------------	-------------	-------------	-------------	-------------	-------------	-------------	-------------	-------------	-------------	-------------	-------------	-------------	-------------	-------------	-------------	-------------	-------------	-------------	-------------	-------------	-------------	-------------	-------------	-------------	-------------	-------------	-------------	-------------	-------------	-------------	-------------	-------------	-------------	-------------	-------------	-------------	-------------	-------------	-------------	-------------	-------------	-------------	-------------	-------------	-------------	-------------	-------------	-------------	-------------	-------------	-------------	-------------	-------------	-------------	-------------	-------------	-------------	-------------	-------------	-------------	-------------	-------------	-------------	-------------	-------------	-------------	-------------	-------------	-------------	-------------	-------------	-------------	-------------	-------------	-------------	-------------	-------------	-------------	-------------	-------------	-------------	-------------	-------------	-------------	-------------	-------------	-------------	-------------	-------------	-------------	-------------	-------------	-------------	-------------	-------------	-------------	-------------	-------------	-------------	-------------	-------------	-------------	-------------	-------------	-------------	-------------	-------------	-------------	-------------	-------------	-------------	-------------	-------------	-------------	-------------	-------------	-------------	-------------	-------------	-------------	-------------	-------------	-------------	-------------	-------------	-------------	-------------	-------------	-------------	-------------	-------------	-------------	-------------	-------------	-------------	-------------	-------------	-------------	-------------	-------------	-------------	-------------	-------------	-------------	-------------	-------------	-------------	-------------	-------------	-------------	-------------	-------------	-------------	-------------	-------------	-------------	-------------	-------------	-------------	-------------	-------------	-------------	-------------	-------------	-------------	-------------	-------------	-------------	-------------	-------------	-------------	-------------	-------------	-------------	-------------	-------------	-------------	-------------	-------------	-------------	-------------	-------------	-------------	-------------	-------------	-------------	-------------	-------------	-------------	-------------	-------------	-------------	-------------	-------------	-------------	-------------	-------------	-------------	-------------	-------------	-------------	-------------	-------------	-------------	-------------	-------------	-------------	-------------	-------------	-------------	-------------	-------------	-------------	-------------	-------------	-------------	-------------	-------------	-------------	-------------	-------------	-------------	-------------	-------------	-------------	-------------	-------------	-------------	-------------	-------------	-------------	-------------	-------------	-------------	-------------	-------------	-------------	-------------	-------------	-------------	-------------	-------------	-------------	-------------	-------------	-------------	-------------	-------------	-------------	-------------	-------------	-------------	-------------	-------------	-------------	-------------	-------------	-------------	-------------	-------------	-------------	-------------	-------------	-------------	-------------	-------------	-------------	-------------	-------------	-------------	-------------	-------------	-------------	-------------	-------------	-------------	-------------	-------------	-------------	-------------	-------------	-------------	-------------	-------------	-------------	-------------	-------------	-------------	-------------	-------------	-------------	-------------	-------------	-------------	-------------	-------------	-------------	-------------	-------------	-------------	-------------	-------------	-------------	-------------	-------------	-------------	-------------	-------------	-------------	-------------	-------------	-------------	-------------	-------------	-------------	-------------	-------------	-------------	-------------	-------------	-------------	-------------	-------------	-------------	-------------	-------------	-------------	-------------	-------------	-------------	-------------	-------------	-------------	-------------	-------------	-------------	-------------	-------------	-------------	-------------	-------------	-------------	-------------	-------------	-------------	-------------	-------------	-------------	-------------	-------------	-------------	-------------	-------------	-------------	-------------	-------------	-------------	-------------	-------------	-------------	-------------	-------------	-------------	-------------	-------------	-------------	-------------	-------------	-------------	-------------	-------------	-------------	-------------	-------------	-------------	-------------	-------------	-------------	-------------	-------------	-------------	-------------	-------------	-------------	-------------	-------------	-------------	-------------	-------------	-------------	-------------	-------------	-------------	-------------	-------------	-------------	-------------	-------------	-------------	-------------	-------------	-------------	-------------	-------------	-------------	-------------	-------------	-------------	-------------	-------------	-------------	-------------	-------------	-------------	-------------	-------------	-------------	-------------	-------------	-------------	-------------	-------------	-------------	-------------	-------------	-------------	-------------	-------------	-------------	-------------	-------------	-------------	-------------	-------------	-------------	-------------	-------------	-------------	-------------	-------------	-------------	-------------	-------------	-------------	-------------	-------------	-------------	-------------	-------------	-------------	-------------	-------------	-------------	-------------	-------------	-------------	-------------	-------------	-------------	-------------	-------------	-------------	-------------	-------------	-------------	-------------	-------------	-------------	-------------	-------------	-------------	-------------	-------------	-------------	-------------	-------------	-------------	-------------	-------------	-------------	-------------	-------------	-------------	-------------	-------------	-------------	-------------	-------------	-------------	-------------	-------------	-------------	-------------	-------------	-------------	-------------	-------------	-------------	-------------	-------------	-------------	-------------	-------------	-------------	-------------	-------------	-------------	-------------	-------------	-------------	-------------	-------------	-------------	-------------	-------------	-------------	-------------	-------------	-------------	-------------	-------------	-------------	-------------	-------------	-------------	-------------	-------------	-------------	-------------	-------------	-------------	-------------	-------------	-------------	-------------	-------------	-------------	-------------	-------------	-------------	-------------	-------------	-------------	-------------	-------------	-------------	-------------	-------------	-------------	-------------	-------------	-------------	-------------	-------------	-------------	-------------	-------------	-------------	-------------	-------------	-------------	-------------	-------------	-------------	-------------	-------------	-------------	-------------	-------------	-------------	-------------	-------------	-------------	-------------	-------------	-------------	-------------	-------------	-------------	-------------	-------------	-------------	-------------	-------------	-------------	-------------	-------------	-------------	-------------	-------------	-------------	-------------	-------------	-------------	-------------	-------------	-------------	-------------	-------------	-------------	-------------	-------------	-------------	-------------	-------------	-------------	-------------	-------------	-------------	--

### Adapter Board A numbering:

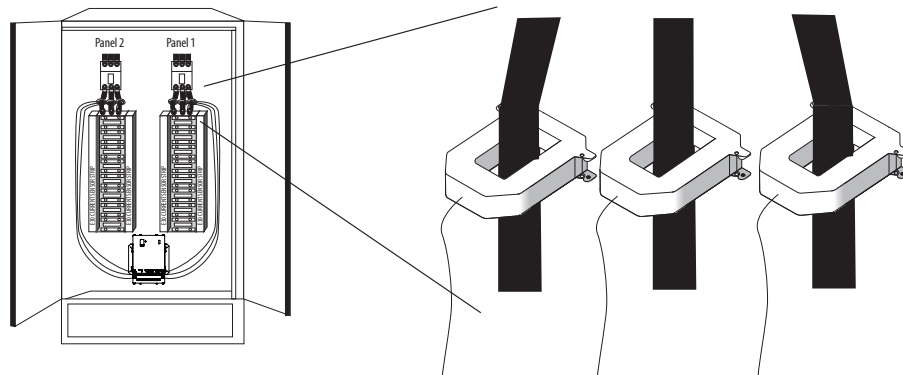
ODD	1	3	5	7	9	11	13	15	17	19	21	23	25	27	29	31	33	35	37	39	41
SEQ	21	20	19	18	17	16	15	14	13	12	11	10	9	8	7	6	5	4	3	2	1

BLACK																																																																																																																																																																																																																																																																																																																																																																																																																																																																														
-------	--	--	--	--	--	--	--	--	--	--	--	--	--	--	--	--	--	--	--	--	--	--	--	--	--	--	--	--	--	--	--	--	--	--	--	--	--	--	--	--	--	--	--	--	--	--	--	--	--	--	--	--	--	--	--	--	--	--	--	--	--	--	--	--	--	--	--	--	--	--	--	--	--	--	--	--	--	--	--	--	--	--	--	--	--	--	--	--	--	--	--	--	--	--	--	--	--	--	--	--	--	--	--	--	--	--	--	--	--	--	--	--	--	--	--	--	--	--	--	--	--	--	--	--	--	--	--	--	--	--	--	--	--	--	--	--	--	--	--	--	--	--	--	--	--	--	--	--	--	--	--	--	--	--	--	--	--	--	--	--	--	--	--	--	--	--	--	--	--	--	--	--	--	--	--	--	--	--	--	--	--	--	--	--	--	--	--	--	--	--	--	--	--	--	--	--	--	--	--	--	--	--	--	--	--	--	--	--	--	--	--	--	--	--	--	--	--	--	--	--	--	--	--	--	--	--	--	--	--	--	--	--	--	--	--	--	--	--	--	--	--	--	--	--	--	--	--	--	--	--	--	--	--	--	--	--	--	--	--	--	--	--	--	--	--	--	--	--	--	--	--	--	--	--	--	--	--	--	--	--	--	--	--	--	--	--	--	--	--	--	--	--	--	--	--	--	--	--	--	--	--	--	--	--	--	--	--	--	--	--	--	--	--	--	--	--	--	--	--	--	--	--	--	--	--	--	--	--	--	--	--	--	--	--	--	--	--	--	--	--	--	--	--	--	--	--	--	--	--	--	--	--	--	--	--	--	--	--	--	--	--	--	--	--	--	--	--	--	--	--	--	--	--	--	--	--	--	--	--	--	--	--	--	--	--	--	--	--	--	--	--	--	--	--	--	--	--	--	--	--	--	--	--	--	--	--	--	--	--	--	--	--	--	--	--	--	--	--	--	--	--	--	--	--	--	--	--	--	--	--	--	--	--	--	--	--	--	--	--	--	--	--	--	--	--	--	--	--	--	--	--	--	--	--	--	--	--	--	--	--	--	--

### Adapter Board B numbering:

EVEN	2	4	6	8	10	12	14	16	18	20	22	24	26	28	30	32	34	36	38	40	42
SEQ	22	23	24	25	26	27	28	29	30	31	32	33	34	35	36	37	38	39	40	41	42

9. Connect 0.333VAC current transducers (CTs) to the conductors to be monitored by snapping CTs around lines, observing local codes regarding bending radius.



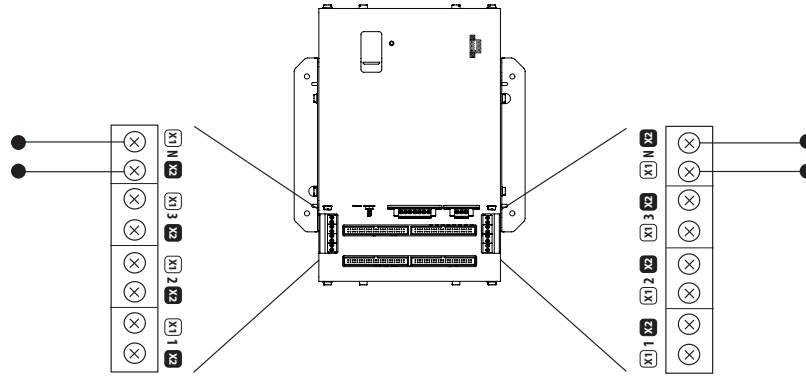
Note: The E31E measures and reports the phase angle of each voltage input and each CT (when there is active current through the primary of that CT). Use the E3x Configuration Tool to view the phase angles of active circuits to help verify that those circuits are connected to and mapped to the proper voltage phases. See the E3x Commissioning Guide for instructions on how to download and operate the tool from a PC.

## Wiring

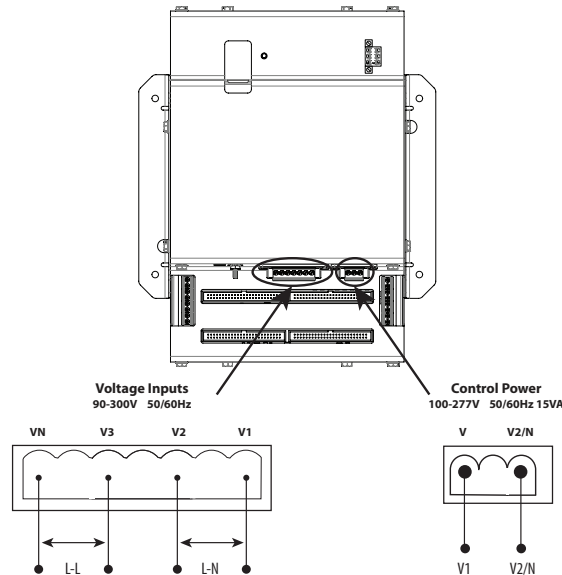
**For all steps in this section, when tightening terminals, apply the correct torque.**

**Aux Inputs: 3.5 to 4.4 in-lb (0.4 to 0.5 N-m); all other terminals: 4.4 to 5.3 in-lb (0.5 to 0.6 N-m).**

1. Wire the CTs to the E31E. Note: For Veris CTs, X1 is the white lead, X2 is the black lead.

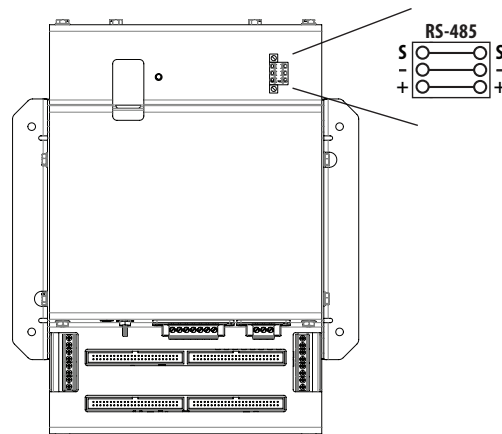


2. Connect 2-wire 100-277 VAC power to the control power terminals. Observe polarity. Connect voltage lines to the voltage taps. Equip voltage lines with fuses and disconnects as required.



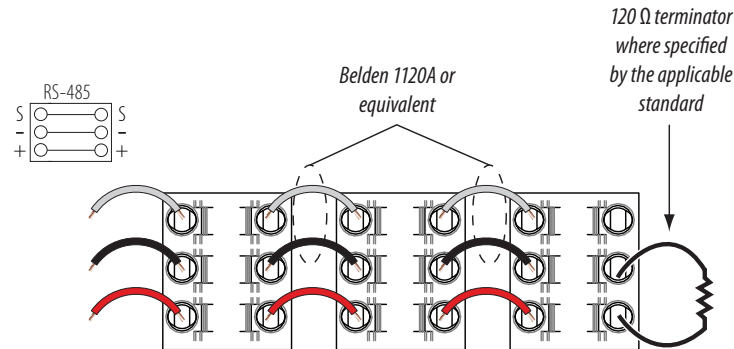
*Voltage taps are shared by both panels.*

3. Connect the 2-wire Modbus RS-485 network.



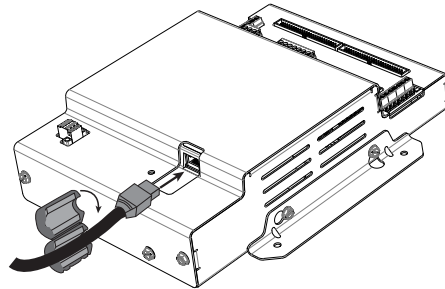
## Wiring (cont.)

4. Mechanically secure the RS-485 cable where it enters the electrical panel.
5. If using Modbus RTU or BACnet MS/TP protocol, connect a serial cable(s) from the RS-485 loop to the serial connector on the E31E. Connect all RS-485 devices in a daisy-chain, and properly terminate the chain. Two sets of connections are provided to simplify daisy-chain connections and enable retention of each wire. Follow all applicable wiring and termination connection guidelines for the standard in use. Note that while both the the Modbus RTU and BACnet MS/TP standards identify requirements for RS-485 line polarization/bias and termination, the value and placement of these resistors varies for each standard. The E31E does not implement any RS-485 line polarization/bias or termination internally. For the RS-485 cable, use shielded, twisted-pair wire, such as Belden 1120A, that is voltage-rated for the installation. The shield is not internally connected to Earth Ground. Connect the shield to Earth Ground somewhere on the RS-485 bus (single point connection only).



**WARNING:** After wiring the RS-485 cable, remove all scraps of wire or foil shield from the electrical panel. Wire scraps coming into contact with high voltage conductors could be **DANGEROUS!**

6. Connect an ethernet cable to a local PC. Secure a ferrite filter (included) around the ethernet cable to ensure the device meets emission requirements. Use the PC to configure the gateway (next section of this document).



7. Once configured, disconnect the local PC. If desired (and the device is configured for operation on the network), connect the E31E directly to the network for ongoing access to the GUI even if primarily using a serial protocol to access and control the E31E.

## Gateway Configuration

### Accessing the Graphical User Interface (GUI)

If the E31E IP address parameters are already configured to work on the network and is being accessed from a PC on that same network, open a web browser and enter the IP address of the E31E into the address/URL field on the browser. Press enter. The GUI launches and appears, as shown, in the browser window.

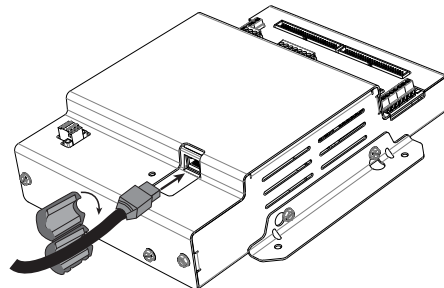
The screenshot shows the Veris Industries E31E GUI. At the top left is the Veris Industries logo. At the top right, it displays 'Model Name: E30E084' and 'Serial Number: 4E39D1EC'. The main section is titled 'Configuration Parameters' and contains a table with four rows of configuration options. Each row has a 'Parameter Name', a 'Parameter Description', and a 'Value' field with a 'Submit' button.

Parameter Name	Parameter Description	Value
Operating_Mode	<b>Operating mode:</b> [0=Locked; 1=Discovery] Locked disables profile changes. Discovery clears profiles and auto-discovers supported devices on Restart. (Leave in Discovery mode for normal operation)	1 Submit
Protocol_Mode	<b>Primary Protocol:</b> [1=BACnet MS/TP; 2=BACnet IP; 3=SNMP; 4=Modbus] (Modbus TCP is active in all modes) (Modbus RTU is active in modes 2 through 4) <b>RESTART after changing to update GUI selections</b>	4 Submit
Upstream_Baud	<b>Baud Rate of the Upstream Control serial port:</b> (to controller - Modbus RTU or BACnet MS/TP) [9600/19200/38400/76800]	38400 Submit
Modbus_Parity	<b>Upstream Modbus RTU parity:</b> [None/Even/Odd] (ignored in MS/TP mode [MS/TP is always None])	None Submit

At the bottom of the GUI, there are four buttons: 'HELP (?)', 'System Restart', 'Download device info', and 'Diagnostics & Debugging'.

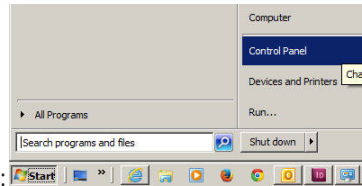
If the E31E IP address parameters are not configured for the network, connect a PC directly and access the GUI from it as follows:

1. Connect a standard CAT5 ethernet cable between a PC and E31E. Secure a ferrite filter (included) around the ethernet cable to ensure the device meets emission requirements. If the user followed the Installation procedure in this document, then this cable is already in place.



## Gateway Configuration (cont.)

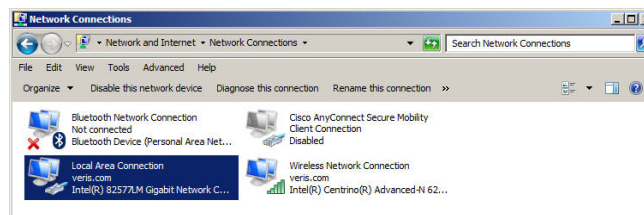
2. Temporarily change the IP address of the PC to a static value on the same subnet as the E31E. For example: If the E31E is set to its factory default IP address of 192.168.1.24, set the PC to an unused static IP address on the 192.168.1.xxx subnet (where xxx is any value between 1 and 255, except 24). Set the subnet mask to 255.255.255.0 (the screen captures in this example were taken using Windows 7; other operating systems will look different).



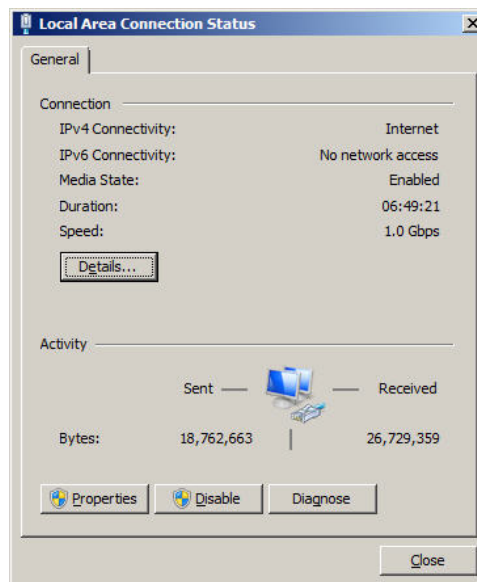
a. Open the Control Panel:

b. In the Control Panel, select Network and Sharing Center. In the Sharing Center, select Change Adapter Settings in the list at the upper left corner.

c. Select the connection for the network that the E31E is included on.

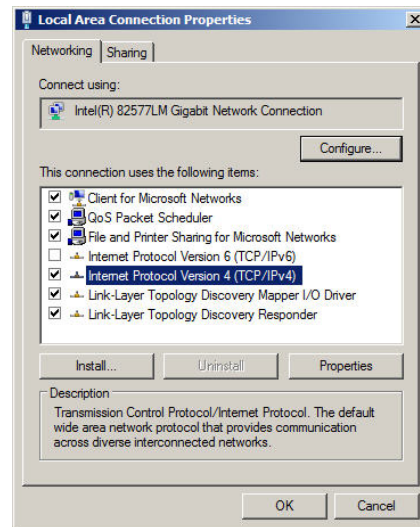


When the Local Area Connection Status window appears, click on Properties

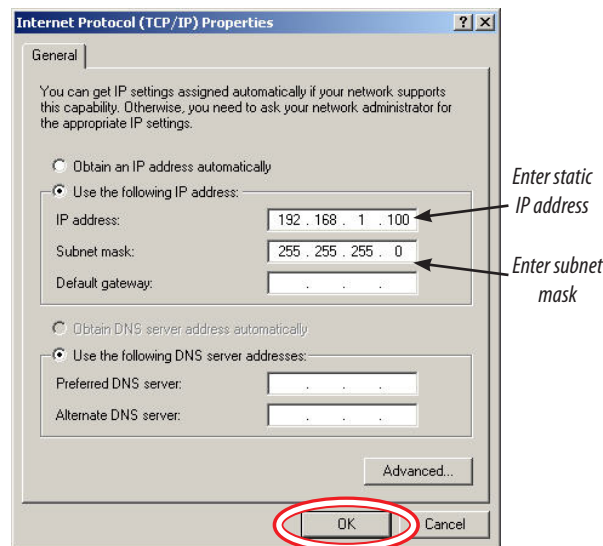


## Gateway Configuration (cont.)

d. Highlight Internet Protocol Version 4 (TCP/IPv4), and click OK.



e. Select <Use the following IP Address>. Make note of the IP address that appears, then enter the static IP address (e.g. if the E31E Series is still set to its default address of 192.168.1.24, then change it to 192.168.1.100). Enter for the 255.255.255.0 subnet mask. Click OK.



e. Click Close.

3. Open a PC web browser and enter the IP address of the E31E (default address is 192.168.1.24) to access the GUI. The GUI launches and appears in the browser window.
4. When finished using the GUI, unplug the ethernet cable from the PC and restore the IP settings as needed.



## Gateway Configuration (cont.)

### Using the GUI to set up the IP address for use on your network

1. Access the GUI according the instructions in the "Accessing the Graphical User Interface (GUI)" section. To set IP address parameters, click the button labeled "Diagnostics and Debugging."

**VERIS INDUSTRIES**

Model Name: E30E084  
Serial Number: 4E39D1EC

**Configuration Parameters**

Parameter Name	Parameter Description	Value
Operating_Mode	<b>Operating mode:</b> [0=Locked; 1=Discovery] Locked disables profile changes. Discovery clears profiles and auto-discovers supported devices on Restart. (Leave in Discovery mode for normal operation)	1 <input type="button" value="Submit"/>
Protocol_Mode	<b>Primary Protocol:</b> [1=BACnet MS/TP; 2=BACnet IP; 3=SNMP; 4=Modbus] (Modbus TCP is active in all modes) (Modbus RTU is active in modes 2 through 4) <b>RESTART after changing to update GUI selections</b>	4 <input type="button" value="Submit"/>
Upstream_Baud	<b>Baud Rate of the Upstream Control serial port:</b> (to controller - Modbus RTU or BACnet MS/TP) [9600/19200/38400/76800]	38400 <input type="button" value="Submit"/>
Modbus_Parity	<b>Upstream Modbus RTU parity:</b> [None/Even/Odd] (ignored in MS/TP mode [MS/TP is always None])	None <input type="button" value="Submit"/>

HELP (?) System Restart Download device info Diagnostics & Debugging

The Diagnostics screen appears.

**VERIS INDUSTRIES**

**Veris E30 Series Gateway**

Status Settings Info Stats

Name	Value
Drive_Configuration	PCC3068
DCC_Version	V1.01a (R)
Kernel_Version	V9.13a (A)
Hardware_Status	Normal
Build_Revision	40-125-gb18a7b0
Build_Date	Mon Dec 9 17:32:23 2013 +0200
BIOS_Version	2.1.7
Firmware_Model	E30E Series Energy Meter
Carrier_Type	UNE Carrier
Data_Points_Used	0
Data_Points_Max	5000
Application_Memory:	
Memory_Reserved_Used	0.85%
Memory_Used	852 KB
Memory_Available	98,368 KB
Avg_Cycle_Time	1
Min_Cycle_Time	0
Max_Cycle_Time	972
Data_Age_Max	0.00ms
Data_Age_Max_Ever	0.00ms
Cycle_Count_Used	0
Cycle_Count_Max	0
Last_Time_Refreshed	Fri Dec 13 12:35:37 2013
Firmware_Version	Fri Dec 13 14:08:35 2013

Home HELP (?) Contact Us System Restart System Time Sync Reset Cycle Times

Have the desired IP settings ready in advance (contact the system administrator). IP parameters for use with BACnet IP are static, not dynamic.

## Gateway Configuration (cont.)

2. Set the IP address for use on the BACnet/IP network:

- a. From the navigation tree (left column) on the GUI, click on Setup and then Network Settings to enter the Edit IP Address Settings menu.

The screenshot shows the Veris E30 Series Gateway web interface. On the left is a 'Navigation' tree with options: Veris E30 Series Gateway, About, Setup, View, and User Messages. The 'Setup' option is selected. The main area is titled 'Veris E30 Series Gateway' and contains three tabs: Status, Settings, and Info Stats. The 'Settings' tab is active, displaying a table of configuration parameters.

Name	Value
FieldServer_Name	-
Error_Message_Logging	Enabled
N1_MAC_Address	0.50.4E.10.1.24
N1_IP_Address	10.166.253.23
N1_Netmask	255.255.255.0
Default Gateway	10.166.253.254
N1 DHCP Client State	DISABLED
N1 DHCP Server State	DISABLED
Cache_Age_Limit	5:00.000s
Cache_Time_To_Live	0.000s
RUI_Enable	Enabled
Cache_Size	500
System_Node_ID	11
Network_Number	23

At the bottom of the interface are buttons for 'Home', 'HELP (F1)', 'Contact Us', and 'System Restart'.

b. Enter the desired IP address in the N1\_IP\_Address field (in the format xxx.xxx.xxx.xxx)

c. If necessary, change the Subnet Mask by entering the appropriate new value in the N1\_Netmask field

d. If the E31E is connected to an ethernet gateway, enter its IP address in the Default Gateway field. This is especially critical if the E31E will be used as a BACnet BBMD device.

e. Click the Update IP settings button. The E31E changes its settings and restarts. The GUI does not connect again until the E31E is installed on the network that matches those settings and the new IP address is entered into a web browser on a PC properly configured for that network.

## Gateway Configuration (cont.)

### Using the GUI to Set the Configuration Parameters for the Communication Protocols

Access the GUI according the instructions in the “Accessing the Graphical User Interface (GUI)” section.

Parameter Name	Parameter Description	Value
Operating_Mode	<b>Operating mode:</b> [0=Locked; 1=Discovery] Locked disables profile changes. Discovery clears profiles and auto-discovers supported devices on Restart. (Leave in Discovery mode for normal operation)	1 <input type="button" value="Submit"/>
Protocol_Mode	<b>Primary Protocol:</b> [1=BACnet MS/TP; 2=BACnet IP; 3=SNMP; 4=Modbus] (Modbus TCP is active in all modes) (Modbus RTU is active in modes 2 through 4) <b>RESTART</b> after changing to update GUI selections	4 <input type="button" value="Submit"/>
Upstream_Baud	<b>Baud Rate of the Upstream Control serial port:</b> (to controller - Modbus RTU or BACnet MS/TP) [9600/19200/38400/76800]	38400 <input type="button" value="Submit"/>
Modbus_Parity	<b>Upstream Modbus RTU parity:</b> [None/Even/Odd] (ignored in MS/TP mode [MS/TP is always None])	None <input type="button" value="Submit"/>

HELP (?)   System Restart   Download device info   Diagnostics & Debugging

The home screen on the GUI provides fields for configuration of the E31E. The E31E has four primary modes of operation, each of which support a different combination of protocols. Each option field has a Submit button to the right. When changing the value in any field, click Submit to store the new value. The GUI prompts the user to restart the system. If multiple values are changed, it is easiest to submit all changes and restart only once when finished with the whole screen. To restart, click the System Restart button in the row at the bottom of the screen. The restart takes several seconds, during which the server may lose its connection. Messages appear at the top of the screen indicating current status, but do not perform any actions. Simply allow the tool to complete the restart cycle.

The first selection in the GUI is Operating\_Mode, which has two choices:

1. Locked: used for all normal product operation. It is provided as a tool for high-level technical support. The gateway retains its current profile configuration when powered.
2. Discovery mode (default): deletes profiles and rediscovers them when the device is powered again. The results are the same, unless the profile configuration is intentionally altered. Profile selection and discovery are especially important when using BACnet or SNMP protocols. For normal operation, always use discovery mode.

The second selection in the GUI is Protocol\_Mode, used to select the combination of protocols the product communicates with. The E31E supports five protocols, some of which can operate simultaneously. The table below shows what protocols are supported in each mode.

Protocol Mode	Primary Protocol	Ethernet Protocol	RS-485 Protocol
1	BACnet MS/TP	Modbus TCP	BACnet MS/TP
2	BACnet IP	BACnet IP/Modbus TCP	Modbus RTU
3	SNMP	SNMP/Modbus TCP	Modbus RTU
4	Modbus	Modbus TCP	Modbus RTU

To select a primary protocol mode, enter the corresponding number into the text field adjacent to the Primary Protocol option and click the Submit button to the left of the text field. A prompt appears at the top of the screen instructing the user to restart the system. When finished, the screen refreshes itself with the appropriate fields for the selected mode.

The next GUI selection, in any protocol mode, is the Upstream\_Baud rate selection. If you have selected BACnet MS/TP (mode 1) as the primary protocol mode, this value sets the MS/TP baud rate. If you have selected modes 2 or 3 as the primary protocol mode, you may not be using the RS-485 interface at all. If so, this setting can be ignored.

If you have selected BACnet IP, SNMP or Modbus mode, the next selection is Modbus\_Parity, which sets the parity of the upstream serial connection. If using Modbus RTU protocol, set this to match your Modbus master. If not, ignore this field.

## Gateway Configuration (cont.)

The following sections show the field selections (with factory default values) specific to each of the four Protocol\_Modes.

### 1. BACnet MS/TP mode



Parameter Name	Parameter Description	Value
Operating_Mode	<b>Operating mode:</b> [0=Locked; 1=Discovery] Locked disables profile changes. Discovery clears profiles and auto-discovers supported devices on Restart. (Leave in Discovery mode for normal operation)	1 <input type="button" value="Submit"/>
Protocol_Mode	<b>Primary Protocol:</b> [1=BACnet MS/TP; 2=BACnet IP; 3=SNMP; 4=Modbus] (Modbus TCP is active in all modes) (Modbus RTU is active in modes 2 through 4) <b>RESTART after changing to update GUI selections</b>	1 <input type="button" value="Submit"/>
Upstream_Baud	<b>Baud Rate of the Upstream Control serial port:</b> (to controller - Modbus RTU or BACnet MS/TP) [9600/19200/38400/76800]	38400 <input type="button" value="Submit"/>
DeviceID_Offset	<b>Default BACnet Device ID numbers:</b> [0-4194302] The Virtual Router Device ID = the DeviceID_Offset. The Device ID of a Meter at Modbus address 1 will be DeviceID_Offset+1	23000 <input type="button" value="Submit"/>
Virt_Router_Net	<b>BACnet network number of the Virtual Router:</b> [1-65535] This network number must be DIFFERENT than all other networks in your BACnet enterprise.	23 <input type="button" value="Submit"/>
MSTP_Max_Master	<b>BACnet MS/TP Max Master value:</b> [1 - 127]	127 <input type="button" value="Submit"/>
MSTP_MAC_Addr	<b>BACnet MS/TP MAC address:</b> [1-127]	1 <input type="button" value="Submit"/>

The first three options are discussed previously.

The DeviceID\_Offset parameter is used to assign Device\_IDs on power-up or on restart until they have been overwritten via BACnet. Enter a different value here and click submit. The new value is first used at the next power-up or system restart. Valid Device\_ID numbers range from 1 to 4194303. Since the numbers assigned during discovery are the sum of the Offset and the Modbus address (which can be any value from 1-255), the Offset values entered in the GUI must be no larger than 4194055.

The E31E gateway creates a BACnet virtual router and separate BACnet devices for each 42-channel meter panel behind this virtual router, allowing the devices to be discoverable and independently accessed via BACnet, even if the virtual router is connected by MS/TP, using a single MAC address. To use this product with MS/TP, the BACnet system must support the discovery and use of a BACnet router on the MS/TP trunk and any devices beyond it. This virtual router creates an exclusive BACnet network on which the meter's BACnet devices reside. This network must have a BACnet network number that is different from any other networks in the entire BACnet enterprise. When multiple E31E products are added anywhere in the enterprise, each one must have a unique network number. Failure to set an exclusive value in this field causes communication conflicts in the BACnet system.

Enter a non-conflicting value here and click submit. Valid network numbers range from 1 to 65534; if other values are entered, the network number defaults to 5. The new value is first used at the next power-up or system restart. If using an external BACnet router to connect the E31E as an MS/TP device, it is recommended that the router also be restarted after the E31E has completed discovery, when the network number is changed.

## Gateway Configuration (cont.)

The next field for the BACnet MS/TP protocol mode is the MSTP\_Max\_Master, which allows this value to be set prior to using BACnet software to access the E31E. The default value of 127 works regardless of the addresses the MS/TP network uses, but selecting a lower value may optimize the network. Do not set this value lower than the highest address on the network. To set this value via BACnet, write to the Max\_Master property of the device object for the E31E's virtual router.

The final field is the MSTP\_MAC\_Addr, which sets the MAC address for the virtual router. The E31E panel(s) are devices on the internal BACnet network and are not directly addressable as MAC addresses on the MS/TP network.

### 2. BACnet IP mode

Parameter Name	Parameter Description	Value
Operating_Mode	<b>Operating mode:</b> [0=Locked; 1=Discovery] Locked disables profile changes. Discovery clears profiles and auto-discovers supported devices on Restart. (Leave in Discovery mode for normal operation)	1 Submit
Protocol_Mode	<b>Primary Protocol:</b> [1=BACnet MS/TP; 2=BACnet IP; 3=SNMP; 4=Modbus] (Modbus TCP is active in all modes) (Modbus RTU is active in modes 2 through 4) RESTART after changing to update GUI selections	2 Submit
Upstream_Baud	<b>Baud Rate of the Upstream Control serial port:</b> (to controller - Modbus RTU or BACnet MS/TP) [9600/19200/38400/76800]	38400 Submit
Modbus_Parity	<b>Upstream Modbus RTU parity:</b> [None/Even/Odd] (ignored in MS/TP mode [MS/TP is always None])	None Submit
DeviceID_Offset	<b>Default BACnet Device ID numbers:</b> [0-4194302] The Virtual Router Device ID = the DeviceID_Offset. The Device ID of a Meter at Modbus address 1 will be DeviceID_Offset+1	23000 Submit
Virt_Router_Net	<b>BACnet network number of the Virtual Router:</b> [1-65535] This network number must be DIFFERENT than all other networks in your BACnet enterprise.	23 Submit
BACnet_IP_Port	<b>BACnet IP port:</b> Default is 47808 (0xBAC0), enter in decimal [1-65535]	47808 Submit
BBMD_Enable	<b>Enable BBMD support:</b> [Enter BBMD to enable or - (hyphen) to disable] Specify other BBMD devices in a .bdl.ini file and transfer to unit via Diagnostics & Debugging	- Submit

BACnet IP mode uses the same DeviceID\_Offset and Virt\_Router\_Net parameters described above for BACnet MS/TP mode. One additional parameter, BACnet\_IP\_Port, is used to set the UDP port. Most BACnet systems use the default port (47808 decimal, 0xBAC0 hex) that is recommended in the BACnet standard as the only UDP port. Some large systems need to segment the enterprise and use more than port. If so, enter the number of the port you need to use to access this device. BACnet IP mode does not use MSTP\_Max\_Master or MSTP\_MAC\_Addr.

BACnet IP mode adds another field called BBMD\_Enable. See the section BBMD Support for a full description of how to enable and use BBMD support.

## Gateway Configuration (cont.)

### 3. SNMP mode

#### Configuration Parameters

Parameter Name	Parameter Description	Value
Operating_Mode	<b>Operating mode:</b> [0=Locked; 1=Discovery] <i>Locked</i> disables profile changes. <i>Discovery</i> clears profiles and auto-discovers supported devices on Restart. <b>(Leave in Discovery mode for normal operation)</b>	1 <input type="button" value="Submit"/>
Protocol_Mode	<b>Primary Protocol:</b> [1=BACnet MS/TP; 2=BACnet IP; 3=SNMP; 4=Modbus] (Modbus TCP is active in all modes) (Modbus RTU is active in modes 2 through 4) <b>RESTART after changing to update GUI selections</b>	3 <input type="button" value="Submit"/>
Upstream_Baud	<b>Baud Rate of the Upstream Control serial port:</b> (to controller - Modbus RTU or BACnet MS/TP) [9600/19200/38400/76800]	38400 <input type="button" value="Submit"/>
Modbus_Parity	<b>Upstream Modbus RTU parity:</b> [None/Even/Odd] (ignored in MS/TP mode [MS/TP is always None])	None <input type="button" value="Submit"/>
SNMP_Community	<b>SNMP Community string:</b> [character string]	Veris <input type="button" value="Submit"/>
SNMP_Notif_IP	<b>Address of the SNMP Notification client:</b> [xxx.xxx.xxx.xxx]	192.168.1.67 <input type="button" value="Submit"/>

SNMP mode uses two unique parameters. The SNMP\_Community string is used to control access to the device. Whatever value entered must be used in the MIB browser or SNMP access software to communicate with this device.

The last parameter, SNMP\_Notif\_IP is used to set the IP address of the client that used to receive SNMP event notifications, such as alarms.

#### Operating the E31E

Restart the E31E by using the button at the bottom of the GUI or by cycling the power. It takes about 30 seconds to initialize completely and be ready for external communication.

## Gateway Configuration (cont.)

### *BACnet Network Management – Important Steps to Avoid Conflicts*

BACnet configuration uses two default settings that might need to be changed, depending on the application.

**a. Virtual router network ID number.** Every logical network segment (IP subnet, MS/TP trunk, etc.) in an entire system must have a (16-bit) network ID number that is unique from all other BACnet networks in the enterprise. The BACnet network administrator assigns this network ID so that no two ID numbers conflict (whether using BACnet/IP or MS/TP). Within each segment, every device is physically identified by the combination of its 8-bit MAC address and the 16-bit network ID number. To support multiple meter panels (panel 1 and panel 2 are separate) with a single gateway, the E31E creates a virtual BACnet router that presents multiple BACnet devices using a single (its own) MS/TP MAC address. Each E31E must have its own (internal) network ID, and it creates a device object for itself and one for each Modbus address discovered.

The factory default network address is 50 (decimal). If that number is already in use in the system, assign a unique address using the graphical user interface (GUI) on the built-in web server (this requires an ethernet connection to a web browser; see BACnet/IP Setup section for instructions on changing configuration settings using the GUI). Valid network numbers range from 1 to 65534; if other values are entered, the network number defaults to 5.

**b. Device\_ID Offset.** Every BACnet device must have a BACnet Device\_ID number that is unique throughout the entire enterprise. Since the E31E presents every Modbus meter as a BACnet device, each connected meter that has a Modbus address must have a BACnet Device\_ID.

By default, each device discovered receives a Device\_ID number that is the sum of an offset value (default is 50000) and the Modbus address of the device. If these Device\_ID numbers cause a conflict with existing devices in the system, or if the system includes multiple E31E Series, change the Device\_ID numbers before connecting the E31E to the system. This can be managed one of two ways:

- i. Connect to the E31E directly (offline from the system) with the devices (meters). After the E31E discovers the devices and assigns their default ID numbers, the user can choose new Device\_ID values and write these to each device using BACnet software. Subsequent discoveries will not overwrite these values with defaults even if the E31E is then set to Discovery mode.
- ii. Use the GUI on the built-in web server to modify the offset value used to calculate default Device\_IDs in the discovery process (this requires an ethernet connection to a web browser; see BACnet/IP Setup section for instructions on changing configuration settings using the GUI). The E31E retains this offset value and uses it to assign Device\_ID numbers every time power is cycled if the E31E is in Discovery mode. Valid Device\_ID numbers range from 1 to 4194303. Since the numbers assigned during discovery are the sum of the Offset and the Modbus address (which can be any value from 1-255), any Offset values entered in the GUI must be less than 4194055.



## BACnet PICS

### BACnet PICS (Protocol Implementation Conformance Statement)

Vendor Name: Veris Industries  
BACnet Vendor ID 133  
Product Name: E31E Series Branch Circuit Monitor  
Product Model Number: <Model Number>  
Product Description: Branch Circuit Monitor  
BACnet Protocol Version: Version 1 Revision 12

BACnet Standardized Device Profile (Annex L) – [Note: E31E incorporates a gateway device]  
• BACnet Application Specific Controller (B-ASC)

#### BACnet Interoperability Building Blocks Supported (Annex K):

- K.1.2 BIBB - Data Sharing - ReadProperty-B (DS-RP-B)
- K.1.4 BIBB - Data Sharing - ReadPropertyMultiple-B (DS-RPM-B)
- K.1.8 BIBB - Data Sharing - WriteProperty-B (DS-WP-B)
- K.1.10 BIBB - Data Sharing - WritePropertyMultiple-B (DS-WPM-B)
- K.1.12 BIBB - Data Sharing - COV-B (DS-COV-B)
- K.2.2 BIBB - Alarm and Event-Notification Internal-B (AE-N-I-B)
- K.2.5 BIBB - Alarm and Event-ACK-B (AE-ACK-B)
- K.2.11 BIBB - Alarm and Event-Information-B (AE-INFO-B)
- K.5.2 BIBB - Device Management - Dynamic Device Binding-B (DM-DDB-B)
- K.5.4 BIBB - Device Management - Dynamic Object Binding-B (DM-DOB-B)
- K.5.6 BIBB - Device Management - DeviceCommunicationControl-B (DM-DCC-B)
- K.5.12 BIBB - Device Management - TimeSynchronization-B (DM-TS-B)
- K.5.22 BIBB - Device Management – List Manipulation-B (DM-LM-B)
- K.5.20 BIBB – Device Management-Restart-B (DM-R-B)

#### Standard Object Types Supported

- Device Object
- Analog Input
- Analog Output
- Analog Value

#### Unsupported Properties and Restrictions

- Does not support BACnet CreateObject
- Does not support BACnet DeleteObject
- Does not support any proprietary properties
- No proprietary properties exist
- No range restrictions exist
- Max\_Master is writable

#### Data Link Layer Options:

- BACnet IP, (Annex J)
- MS/TP master (Clause 9), baud rate up to 76.8 kbps

#### Networking Options:

- BACnet/IP Broadcast Management Device (BBMD)
- Registrations by Foreign Devices

#### Character Sets Supported:

- ISO 10646 (UTF-8) / ANSI X3.4



## General SNMP Programming Information

The E31E can be configured to support the SNMP V2c protocol over ethernet. The SNMP community string and the IP address for the client receiving SNMP V2c event notifications can be set via the GUI. MIB files are available for download at <http://www.veris.com/SNMP.aspx> to enable accessing the E31E from an MIB browser.

The E31E OID structure organizes the data under two “panels” representing the two breaker panels that can be monitored by a fully populated E31E. Panel 1 corresponds to the CT strips connected to the “Panel 1A” and “Panel 1B” connectors and to the data set under Modbus address 1 or BACnet device identified as Node\_1 in the GUI. Panel 2 corresponds to the CT strips connected to the “Panel 2A” and “Panel 2B” connectors and to the data set under Modbus address 2 or BACnet device identified as Node\_2 in the GUI.

For each panel, data is arranged under six tree branches.

- The Configuration branch contains all writable configuration parameters.
- The Alarms branch contains all the alarm notification traps, the global alarm status registers and counters and tables of the alarm status indicators.
- The Voltage Inputs branch contains all data measurements pertaining to the voltage inputs.
- The Auxiliary Inputs branch contains all data measurements pertaining to the aux inputs other than voltage-related.
- The Branch Inputs branch contains all data measurements to the branch inputs in table format.
- The Flex Circuits branch contains all data measurements to the logical meter summaries in table format.

## Troubleshooting

Problem	Solution
Product is not communicating over Modbus daisy chain	<ul style="list-style-type: none"> <li>• Check the unit Modbus address to ensure that each device on the daisy chain has a unique address.</li> <li>• Check Parity.</li> <li>• Check the communications wiring.</li> <li>• Check that the daisy chain is properly terminated.</li> </ul>
Power factor reading is not as expected	<ul style="list-style-type: none"> <li>• Verify voltage taps are connected in appropriate phase rotation.</li> <li>• Verify strip configuration register matches actual strip installation.</li> <li>• Verify phase rotation of breakers (firmware rev. 1.012 or higher allows for custom rotation if needed).</li> </ul>
Current reading is not as expected, or reading is on different CT number than expected	<ul style="list-style-type: none"> <li>• Verify strip configuration register matches actual strip installation.</li> <li>• Verify ribbon cable is fully seated and in the correct orientation.</li> </ul>
Current is reading zero, even when small currents are still flowing through circuit	<ul style="list-style-type: none"> <li>• The product cuts off at 50 mA, and will set the reporting register to 0 mA for currents near or below this range.</li> </ul>
E3x Config Tool returns Modbus error on read/write	<ul style="list-style-type: none"> <li>• Verify using the latest release of E3x Config Tool as older versions may not support all features in current product firmware. Latest version is available on our website <a href="http://www.veris.com/modbus.aspx">http://www.veris.com/modbus.aspx</a></li> </ul>

## China RoHS Compliance Information (EFUP Table)

部件名称	产品中有毒有害物质或元素的名称及含量Substances					
	铅 (Pb)	汞 (Hg)	镉 (Cd)	六价铬 (Cr (VI))	多溴联苯 (PBB)	多溴二苯醚 (PBDE)
电子线路板	X	0	0	0	0	0
0 = 表示该有毒有害物质在该部件所有均质材料中的含量均在 SJ/T11363-2006 标准规定的限量要求以下。 X = 表示该有毒有害物质至少在该部件的某一均质材料中的含量超出SJ/T11363-2006标准规定的限量要求。						
Z000057-0A						